



INTERNATIONAL  
CENTRE  
FOR THE  
PREVENTION  
OF CRIME

CENTRE  
INTERNATIONAL  
POUR LA  
PRÉVENTION  
DE LA CRIMINALITÉ

CENTRO  
INTERNACIONAL  
PARA LA  
PREVENCIÓN  
DE LA CRIMINALIDAD

# CRIME PREVENTION AND POLICING – THE CONTRIBUTION OF PUBLIC HEALTH

PRESENTED BY:  
**VIVIEN CARLI**  
INTERNATIONAL CENTRE FOR THE PREVENTION OF  
CRIME (ICPC)

LEPH 2012 - Major session M9

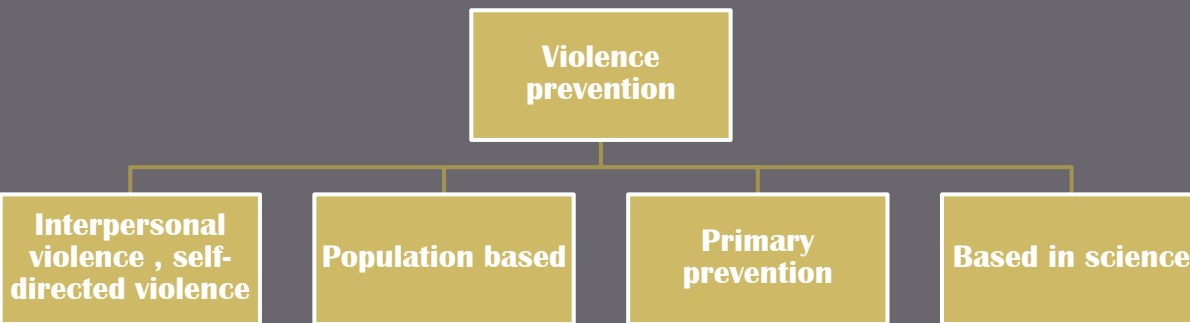
# Presentation Overview

- **Violence prevention vs. Crime prevention**
- **Crime prevention/public health and policing – What do budgets tell us?**
- **The contribution of PH to prevention involving law enforcement**
- **The changing relationship between crime prevention, public health and law enforcement**

# Violence prevention vs. Crime prevention

Monitor the extent of the problem

Develop and evaluate interventions to reduce risks



Widely implement measures that are found to work

Underlying causes and risk factors



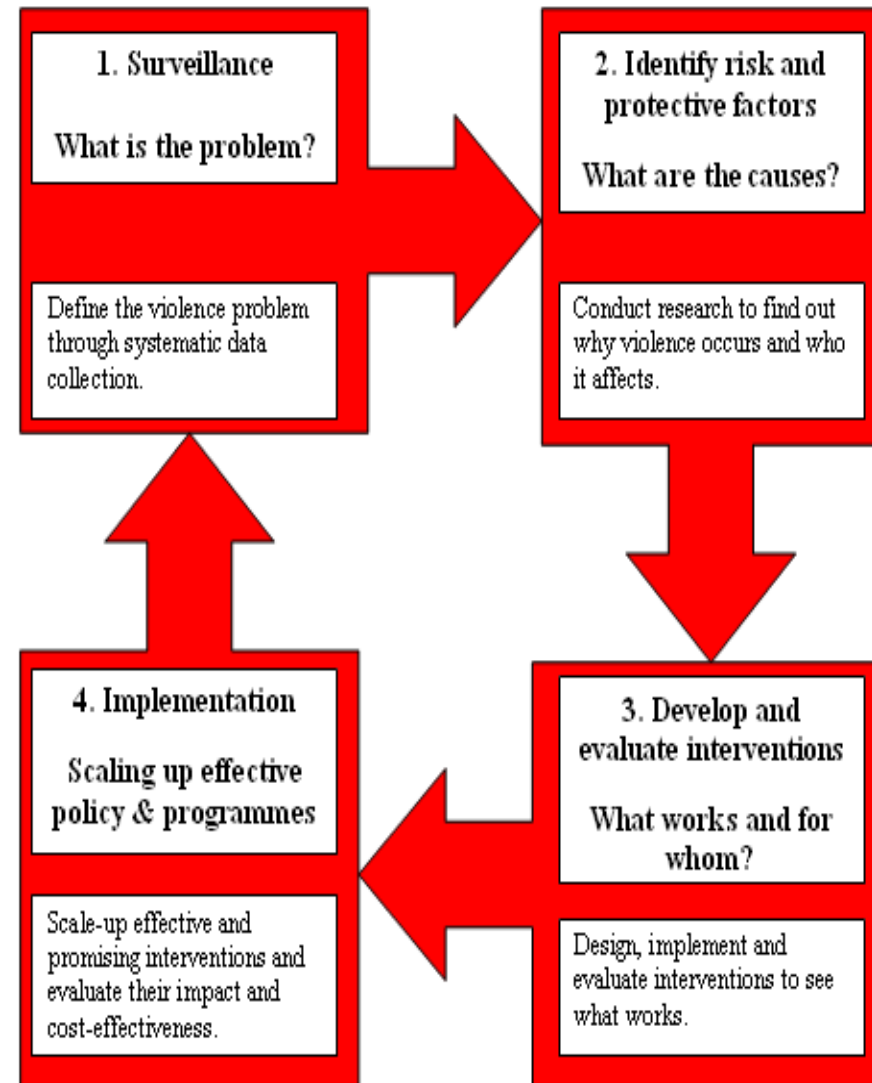
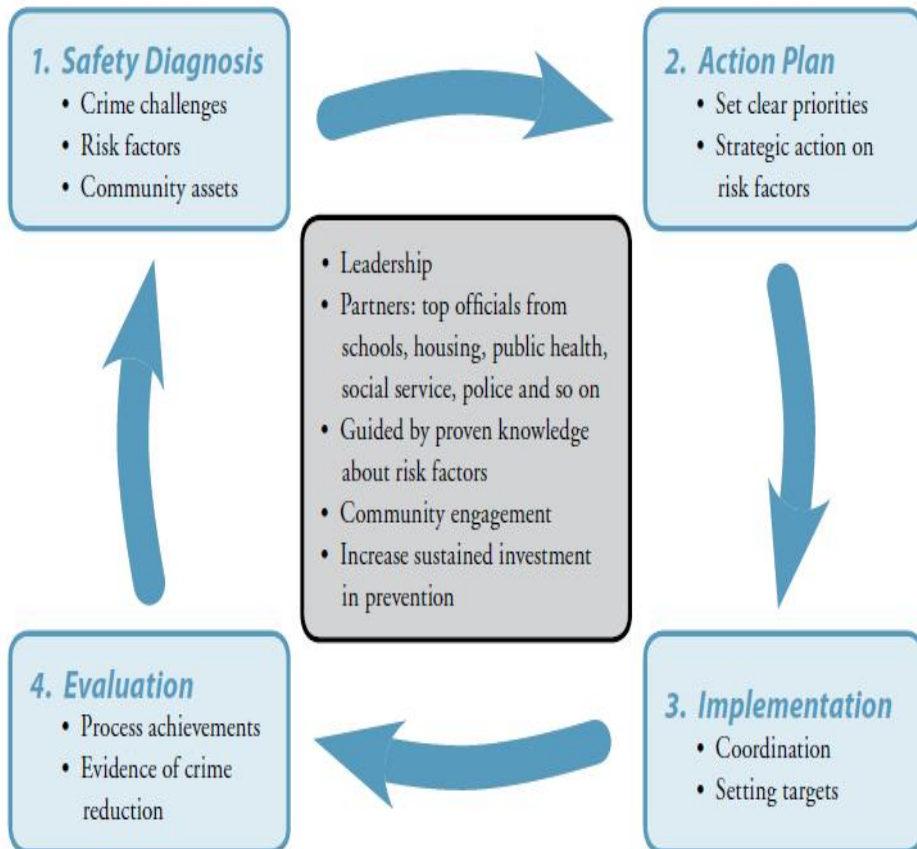
Identify and understand factors that place people at risk

Draws on expertise from many sectors

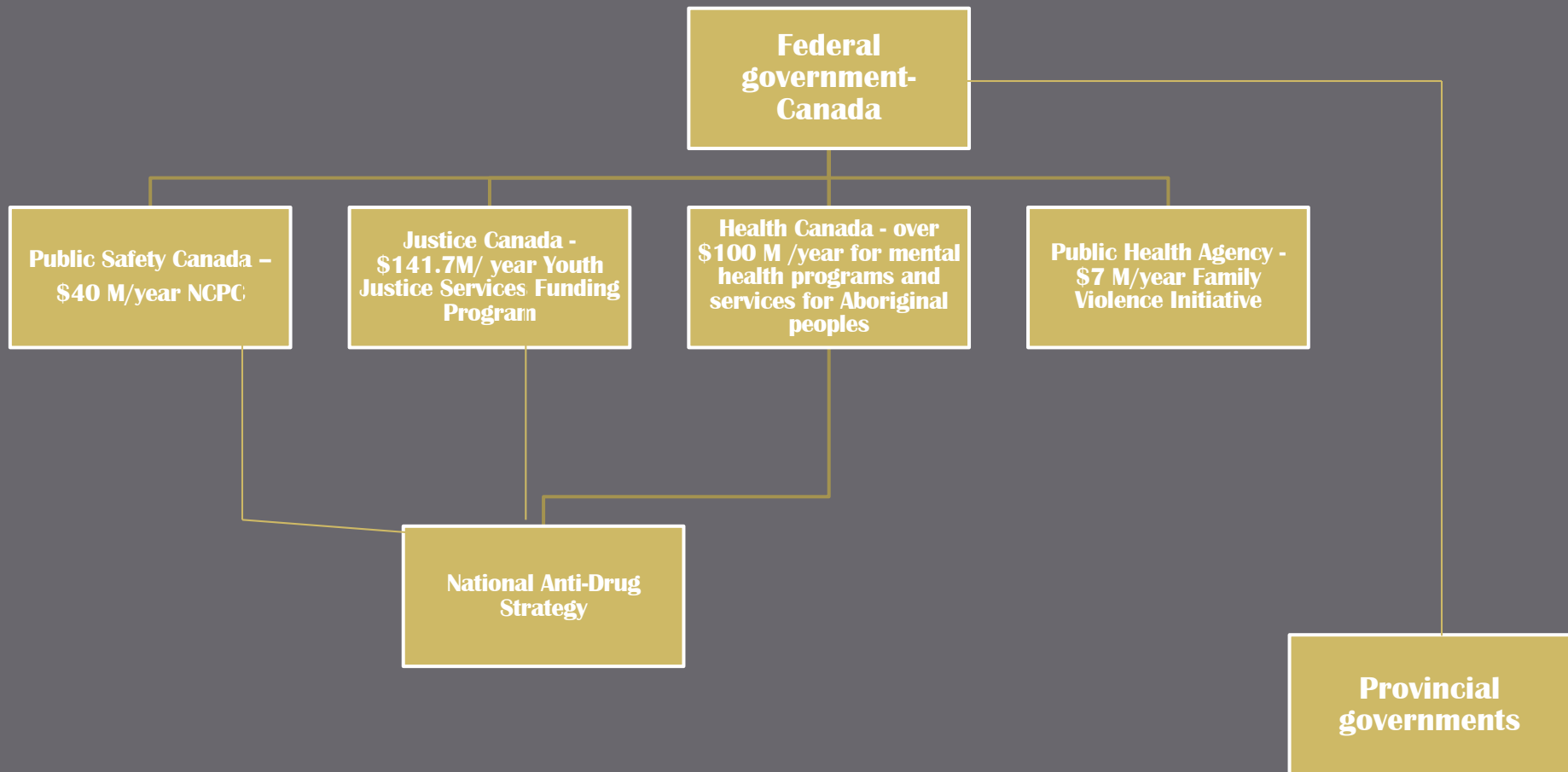
# Crime prevention embraces violence prevention (PH-approach) - Inter-sectoral collaboration

Figure 1

## Effective implementation of crime prevention initiatives



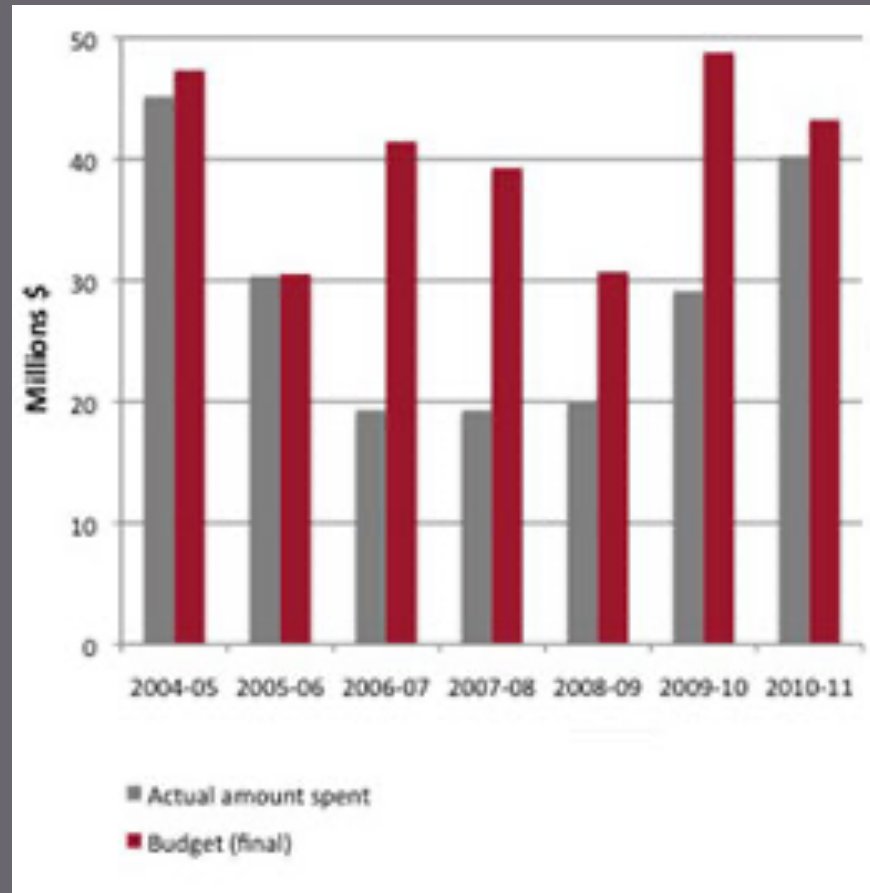
# Public health has minimal appearance in most crime prevention strategies



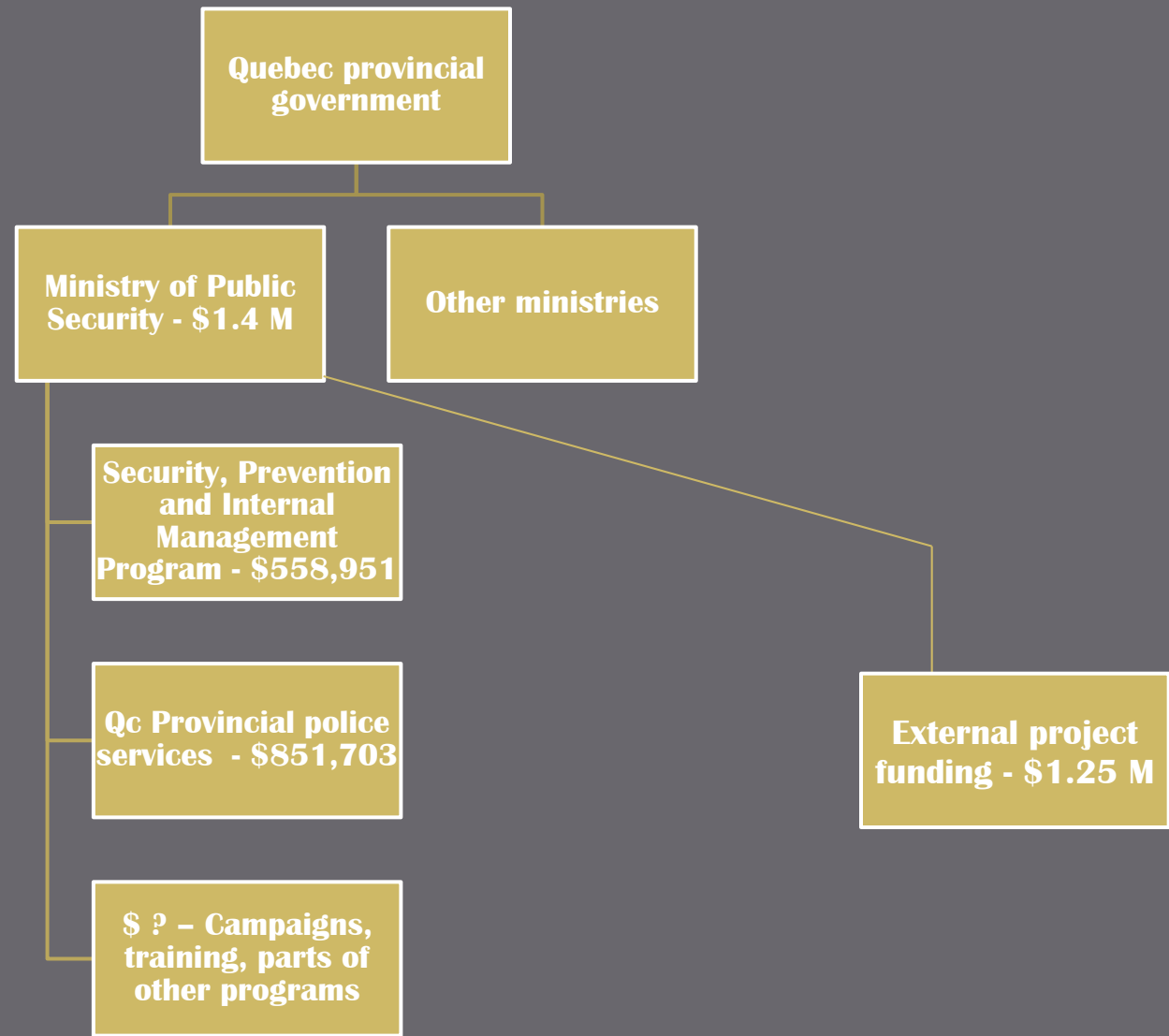
# Crime prevention embraces violence prevention (PH-approach)

## Budget

Public Safety  
Canada –  
National  
Crime  
Prevention  
Centre



# Public health has minimal appearance in most crime prevention strategies

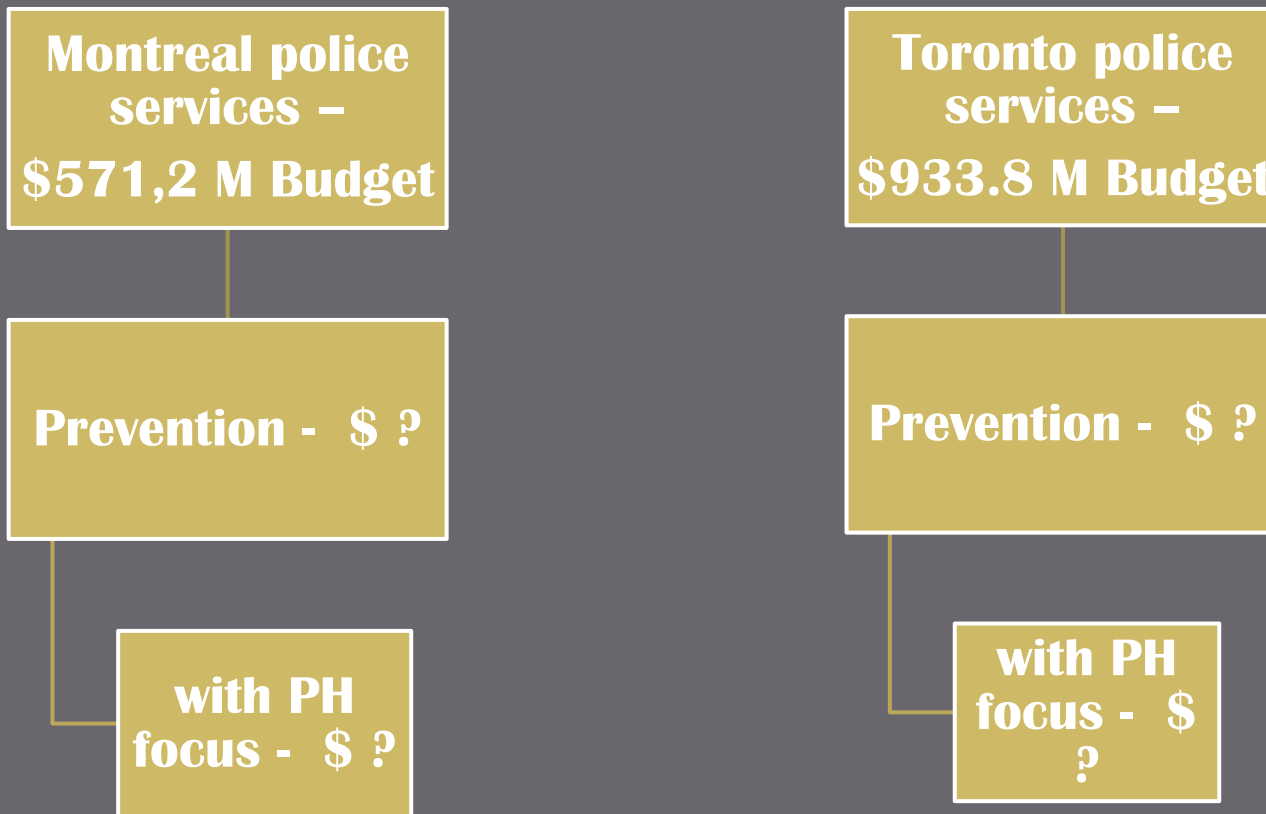


# Public health has minimal appearance in most crime prevention strategies





# Public health has minimal appearance in most crime prevention strategies



# The contribution of public health ?

- **Reducing the burden on policing**
- **Evidence-based**
- **Collecting data for analysis and improving preventive strategies**
- **Diversion and strategies for at-risk and marginalized populations**
- **Awareness-raising**

# The contribution of public health ?

- **Reducing the burden on policing**
- **Diversification of funding**

# The contribution of public health ?

## □ Evidence-based



European Monitoring Centre  
for Drugs and Drug Addiction

# The contribution of public health ?

## INJURY SURVEILLANCE SYSTEMS

Colombia

El Salvador

Nicaragua

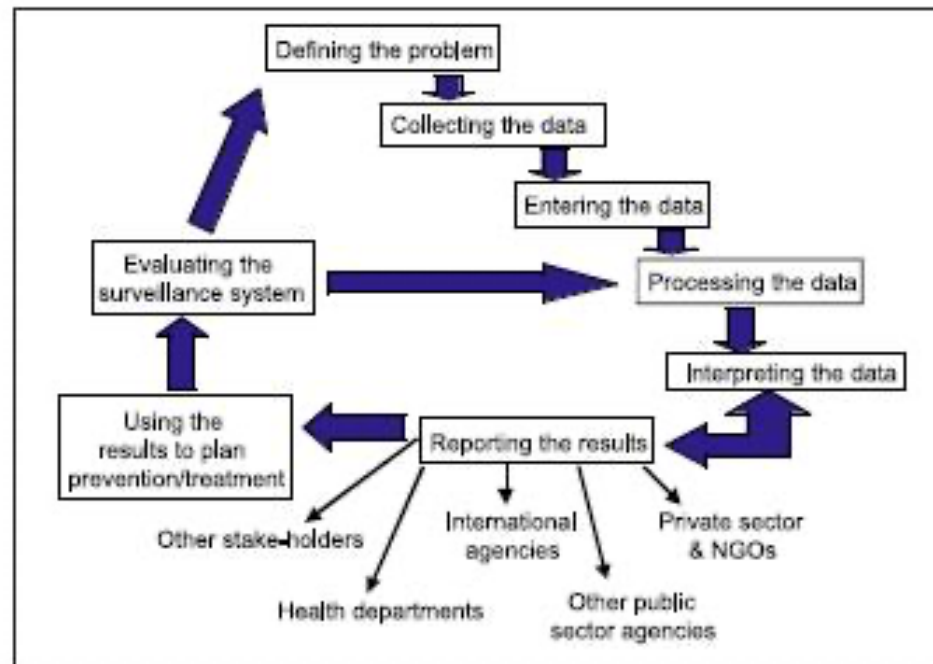
Honduras

Jamaica

South Africa

## □ **Collecting data for analysis and improving preventive strategies**

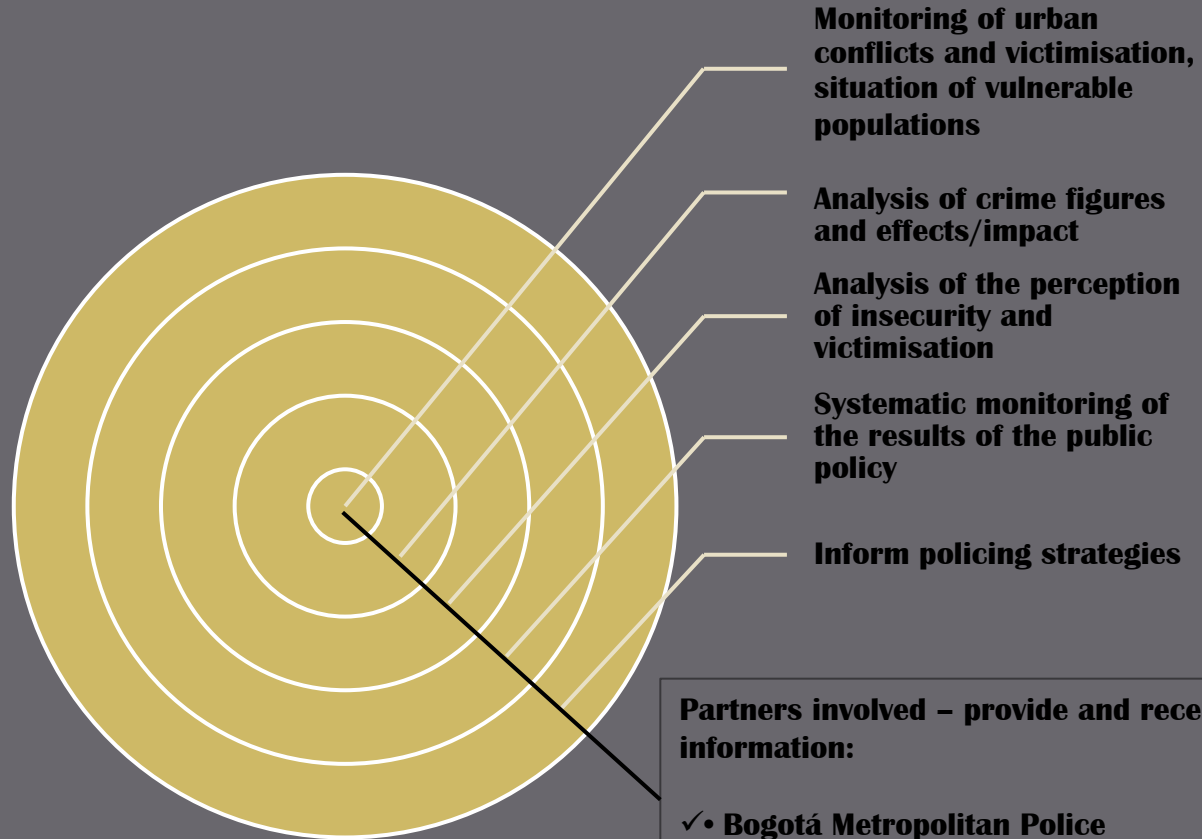
Figure 3:  
Steps in a surveillance system



# The contribution of public health ?

## OBSERVATORIES

Centre for the study and analysis of citizen co-habitation and security (CEACSC), Colombia



### **Partners involved – provide and receive information:**

- ✓• **Bogotá Metropolitan Police**
- ✓• **National Institute of Forensic Medicine**
- ✓• **Prosecutor General's Office**
- ✓• **Secretariat of Health**
- ✓• **Secretariat of mobility**

# The contribution of public health ?

DATA  
SHARING

- **Collecting data for analysis and improving preventive strategies**

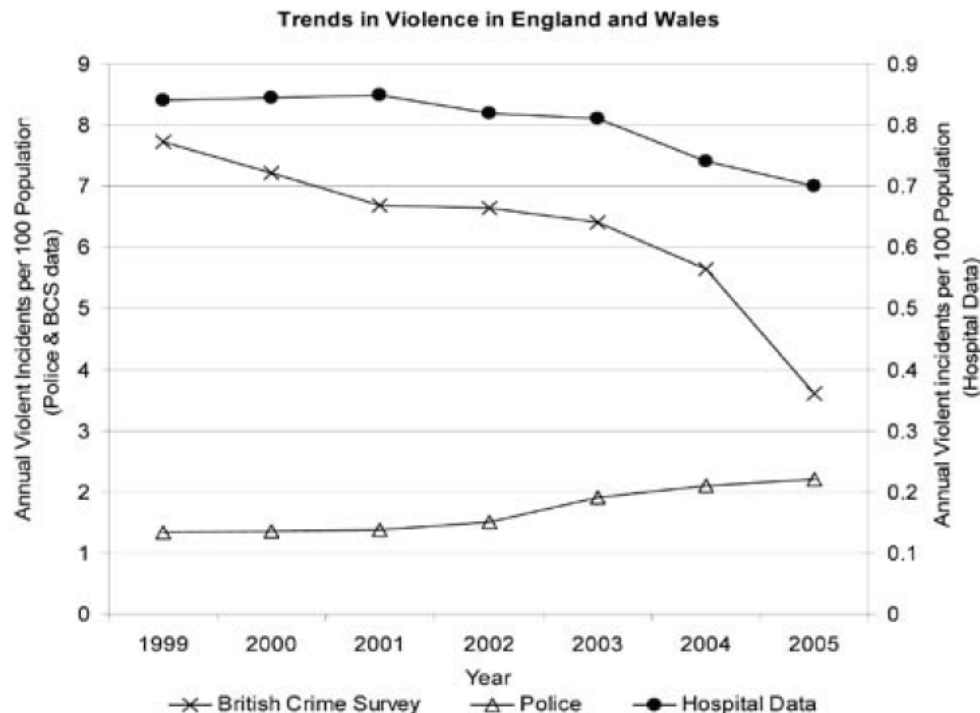


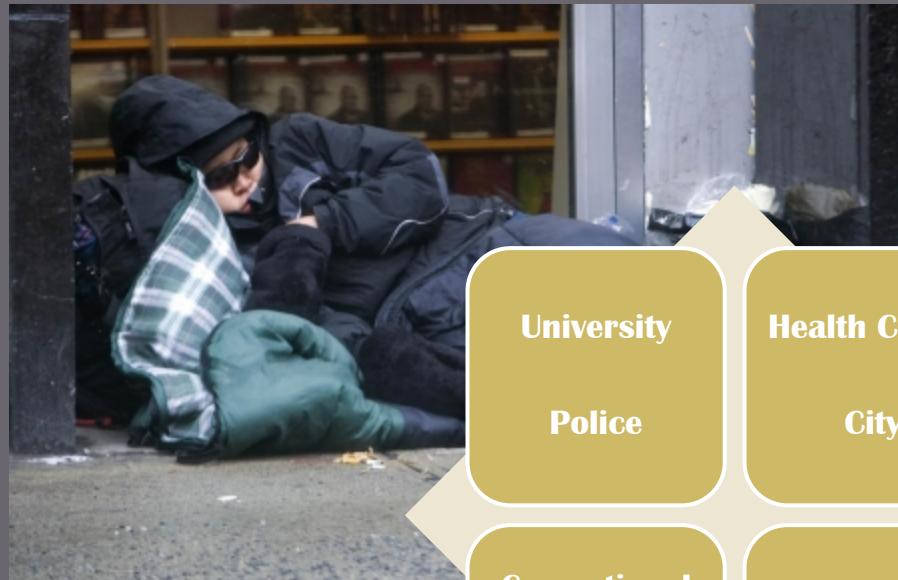
Figure 1: Trends in violence in England and Wales according to police, crime survey and injury data.

# The contribution of public health ?

Quebec:

Urgence  
Psychosociale-  
Justice

- **Diversion and strategies for at-risk and marginalized populations**



University

Health Centre

Police

City

Correctional  
services

Public Safety

Crime justice

Transport



# The contribution of public health ?

## Partners:

- Hamilton Health Sciences – Sexual Assault / Domestic Violence Care Centre
- City of Hamilton Public Health Services
- Elizabeth Fry Society of Hamilton
- McMaster University Student Union
- McMaster University
- McMaster Student Union Student Health Education Centre
- Centre for Addiction and Mental Health
- Hamilton Police Service
- Mohawk College
- Sexual Assault Centre of Hamilton and Area
- Interval House of Hamilton

## □ Awareness-raising

JUST BECAUSE SHE ISN'T SAYING NO...  
DOESN'T MEAN SHE'S SAYING YES.

JUST BECAUSE YOU HELP HER HOME...  
DOESN'T MEAN YOU GET TO HELP YOURSELF.

Just because she's drunk,  
doesn't mean she wants  
to f\*\*k.

sex without consent = sexual assault  
**DON'T BE THAT GUY.**  
www.hamiltonpolice.com

## Hamilton Police:

<http://www.hamiltonpolice.on.ca/NR/rdonlyres/CD4A1505-2F48-4199-8F0B-CF87410EAF22/0/Dontbethatguy.pdf>

# The changing relationship between crime prevention, public health and law enforcement

## Bogota, Colombia

- ✓ **Governance**
- ✓ **Participation**
- ✓ **Social inclusion**
- ✓ **Citizenship**
- ✓ **Rights**



# The changing relationship between crime prevention, public health and law enforcement

## Bogota, Colombia

- **Reality:**
  - **80 homicides per 100,000 inhabitants, drug trafficking, impunity, police corruption, high insecurity**
  
- **Conditions:**
  - **Decentralization of municipal/local authorities**
  - **Citizens demanding action**
  - **Mayor - \$ for 'healthy city budget' - social programmes**

# The changing relationship between crime prevention, public health and law enforcement

**Bogota,  
Colombia**

**\$150 million + investment**

**Importance of political stability**

**Reduce  
firearm  
availability**

**Conflict  
resolution  
projects**

**Citizenship  
culture**

**1993-2004:  
Homicide  
reduces 71%  
reduction -**

**Deaths from  
motor vehicles  
reduces 65%**

**Public  
Space  
Recovery  
programme**

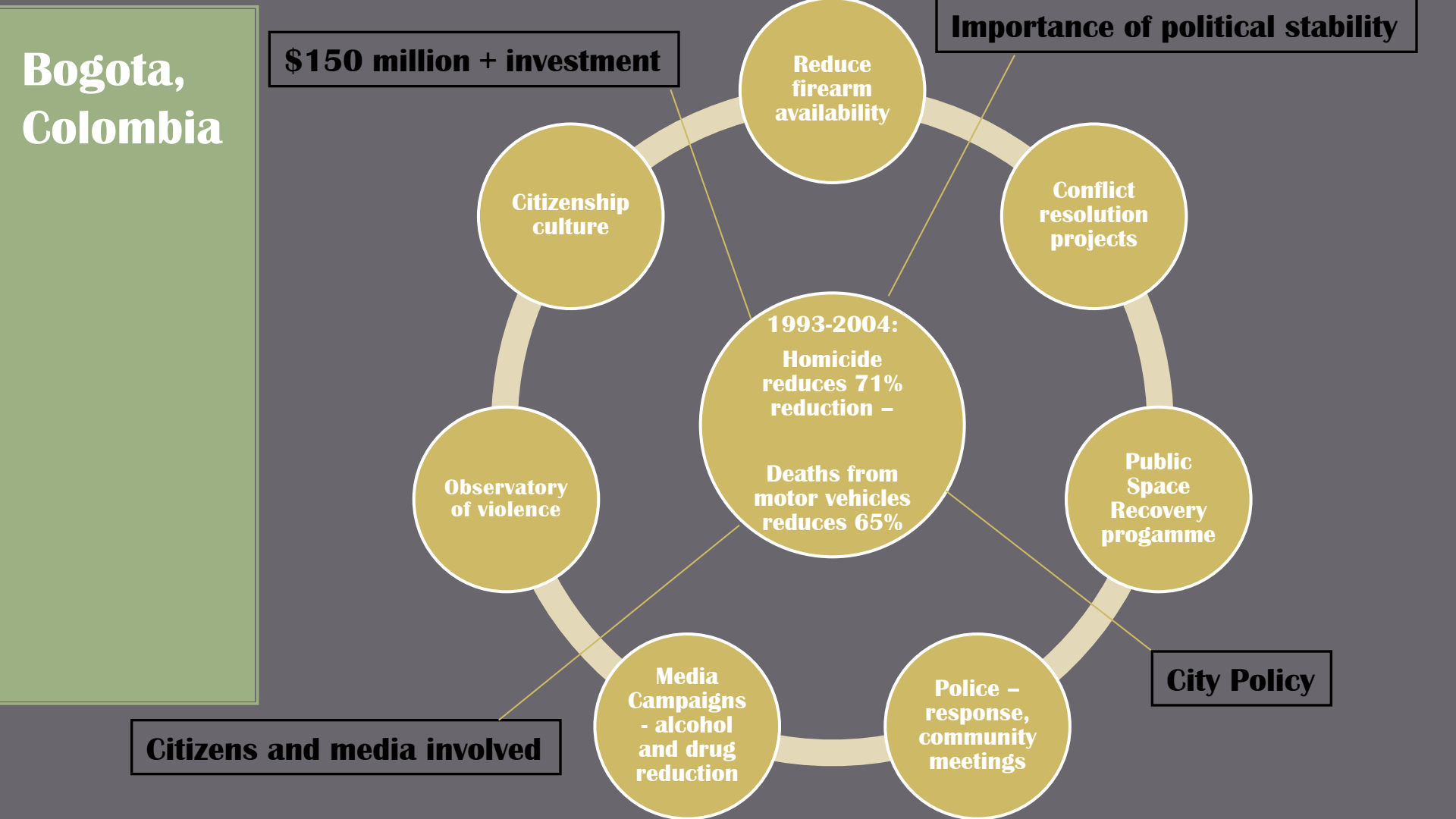
**Observatory  
of violence**

**City Policy**

**Police -  
response,  
community  
meetings**

**Media  
Campaigns  
- alcohol  
and drug  
reduction**

**Citizens and media involved**



# Left-over challenges

- **Integration of public health into policing crime prevention strategies**
- **Quantifying and identifying the real impact/contribution**
- **Envisioning good governance as the key component to enhance/secure the partnership between police, PH and CP**



# Thank you

- **International Centre for the Prevention of Crime (ICPC)**
- **<http://www.crime-prevention-intl.org/>**
  
- **Vivien Carli**
- **[vcarli@crime-prevention-intl.org](mailto:vcarli@crime-prevention-intl.org)**