

Law Enforcement and Public Health Conference

Matt Jukes

Chief Constable



Vulnerability:

Then and Now





Acronym list

ACPO

Association of Chief Police Officers (now National Police Chiefs Council)

BCU

Basic Command Unit

CAIU

Child Abuse Investigation Unit

CSE

Child Sexual Exploitation

DASH

Domestic Abuse Stalking Honour Based Violence

FGM

Female Genital Mutilation

MARAC

Multi-Agency Risk Assessment Conference

POVA

Protection Of Vulnerable Adult

PPN

Public Protection Notification

PPU

Public Protection Unit

PSC

Public Service Centre

VA1

Vulnerable Adult Form 1

KEY

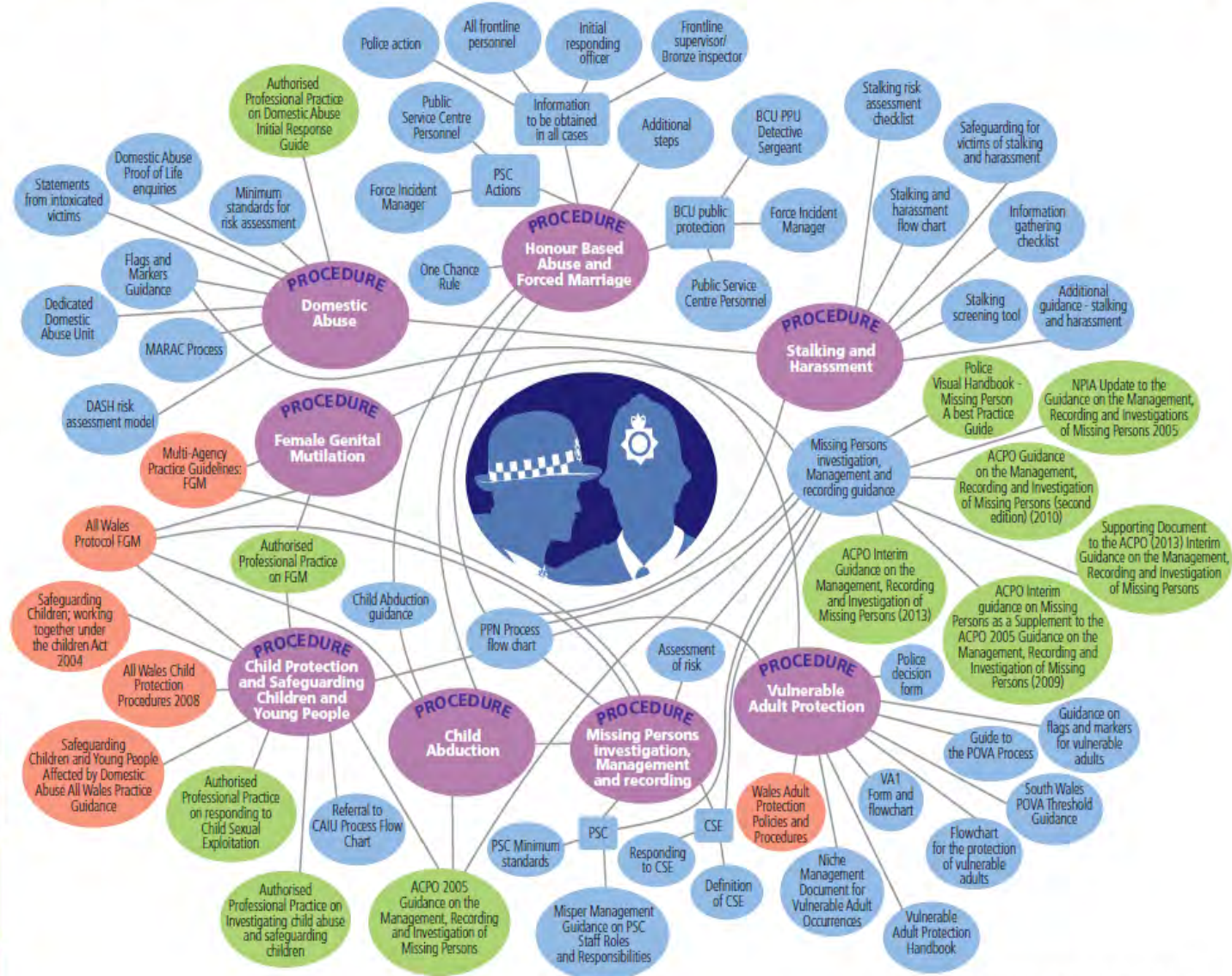
South Wales Police Procedure

South Wales Police guidance/
supplementary document

College of Policing / National
Police Chief Council
(previously Association of
Chief Police Officers)

All Wales Policies

Key procedures, policies and guidance for policing vulnerability in South Wales



Correct at time of production (December 2016).



@CCMattJukes | @swpolice

Context: Missing Persons

10,253

Missing Person occurrences in
2017/2018

62%

Related to an individual under
18, of which almost half were in
local authority care

83%

Of occurrences where the person
had gone missing previously
related to a person under the
age of 18

12%

Of all missing person occurrences
related to a person in CSSIW
registered care home, with 69%
being under the age of 18

98.6%

Of occurrences relating to a
resident of CSSIW registered
care home was a repeat missing
person episode



Police and ACEs

61,590

Public Protection Notifications
31% had more than one PPN

3.2%

Child Public protection
Notifications had care
and support plans

72%

of Child Public
Protection Notifications
logged and closed



Separation



Alcohol
Abuse



Mental Health



Drug Use



Sexual
abuse



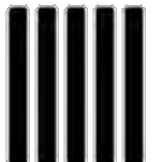
Verbal Abuse



Physical
Abuse



Domestic
Violence



Incarceration



@CCMattJukes | @swpolice



Integration
Collaboration
Long Term
Involvement
Prevention



Comisiynydd
**Cenedlaethau'r
Dyfodol**
Cymru

**Future
Generations**
Commissioner
for Wales



@CCMattJukes | @swpolice



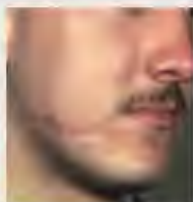
Violence Research Group
Grŵp Ymchwil Trais

Cardiff Model for Violence Prevention

60 Second Briefing

Preventing Violence Using Unique Information from Emergency Health Services – the Cardiff Model

Controlled trials carried out by the Violence Research Group showed that violence can be reduced more effectively if prevention is based on information collected in emergency departments as well as on police intelligence.



In particular, this approach:

- ♦ Reduced violence related hospital admissions by 35%
- ♦ Reduced serious violence recorded by the police by 42%
- ♦ Substantially reduced the costs of violence to health services relative to the costs of the Model
- ♦ Substantially reduced the costs of violence to the criminal justice system
- ♦ Reduced violence in premises licensed to serve alcohol

Background

This new approach to violence prevention was developed in response to the VRG discovery that one half to two thirds of violence which results in hospital treatment is not known to the police. Subsequent research found that police knowledge of violence depends on people reporting these offences, but that many of the injured do not report because they are afraid of reprisals, don't want their own conduct scrutinised, or because they don't think the police could take effective action if they do report.



A Partnership Agreement:

Working Together to Build Resilience Through a Public Health Approach to Policing and Criminal Justice in Wales



@CCMattJukes | @swpolice

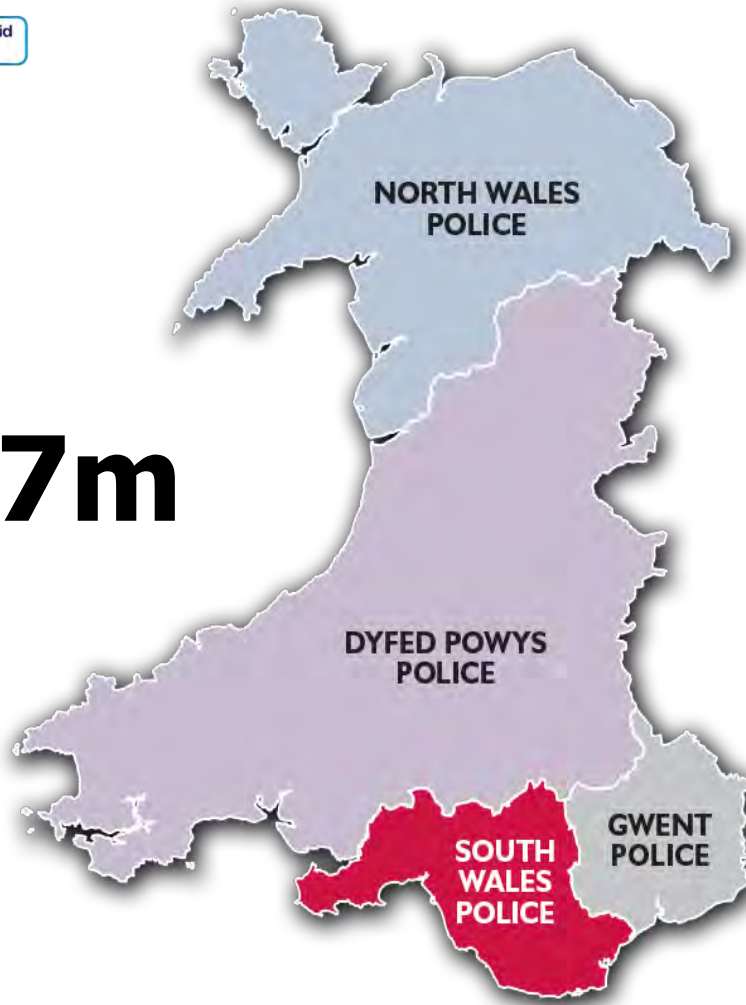


Camau Cynnar
gyda'n Gilydd
Early Action
Together

Rhaglen ACEau yr Heddlu a Phartneriaid
Police & Partners ACEs Programme

Police ACE Transformation

£6.87m



- ACE aware and trauma informed workforce
- Trauma informed systems and processes
- Multiagency Early Help Model
- Developing and testing interventions for policing and key partners through thematic areas
- Providing robust evaluation and evidence for practice and the benefits
- Learning Network

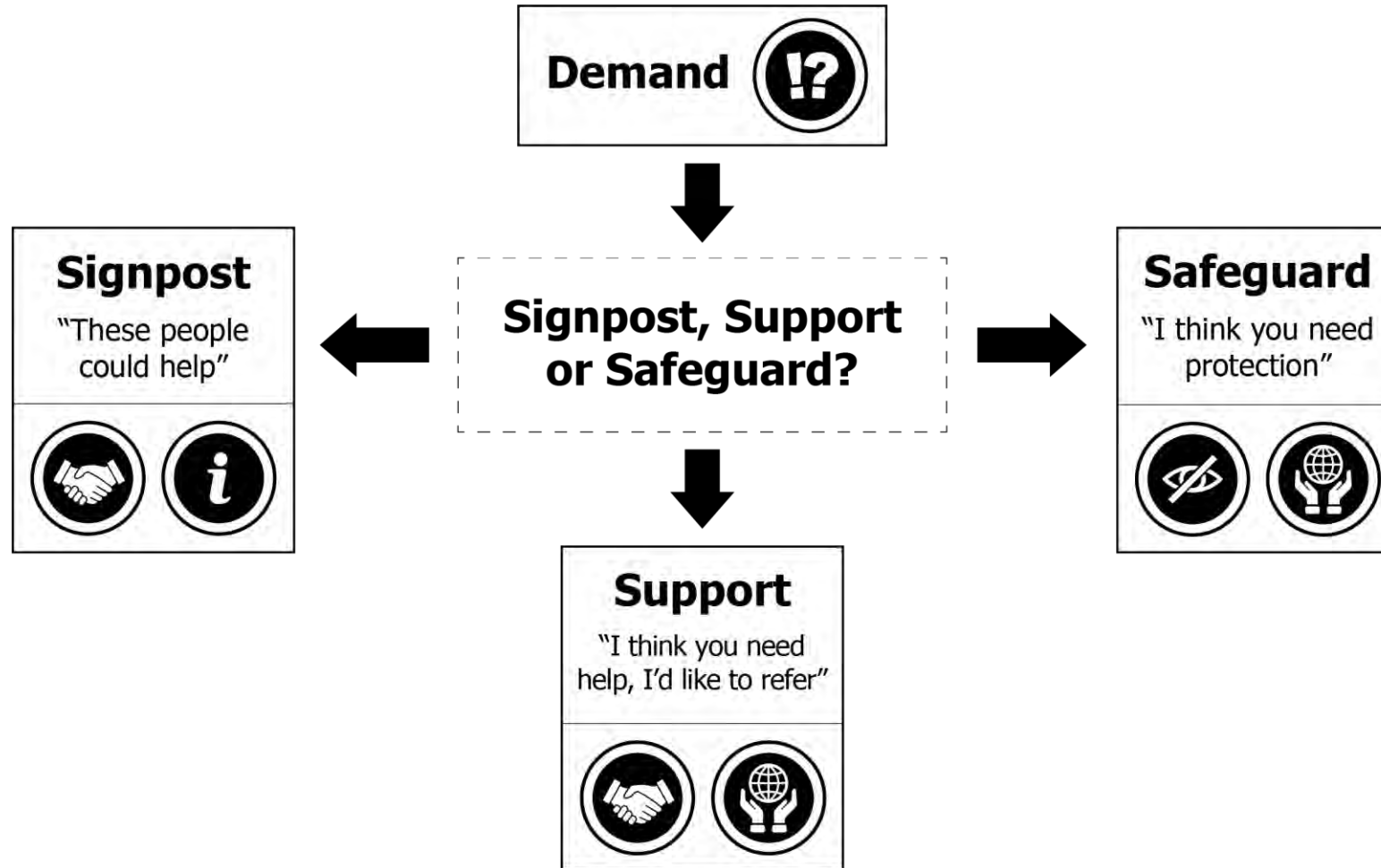


South Wales Programme Scope

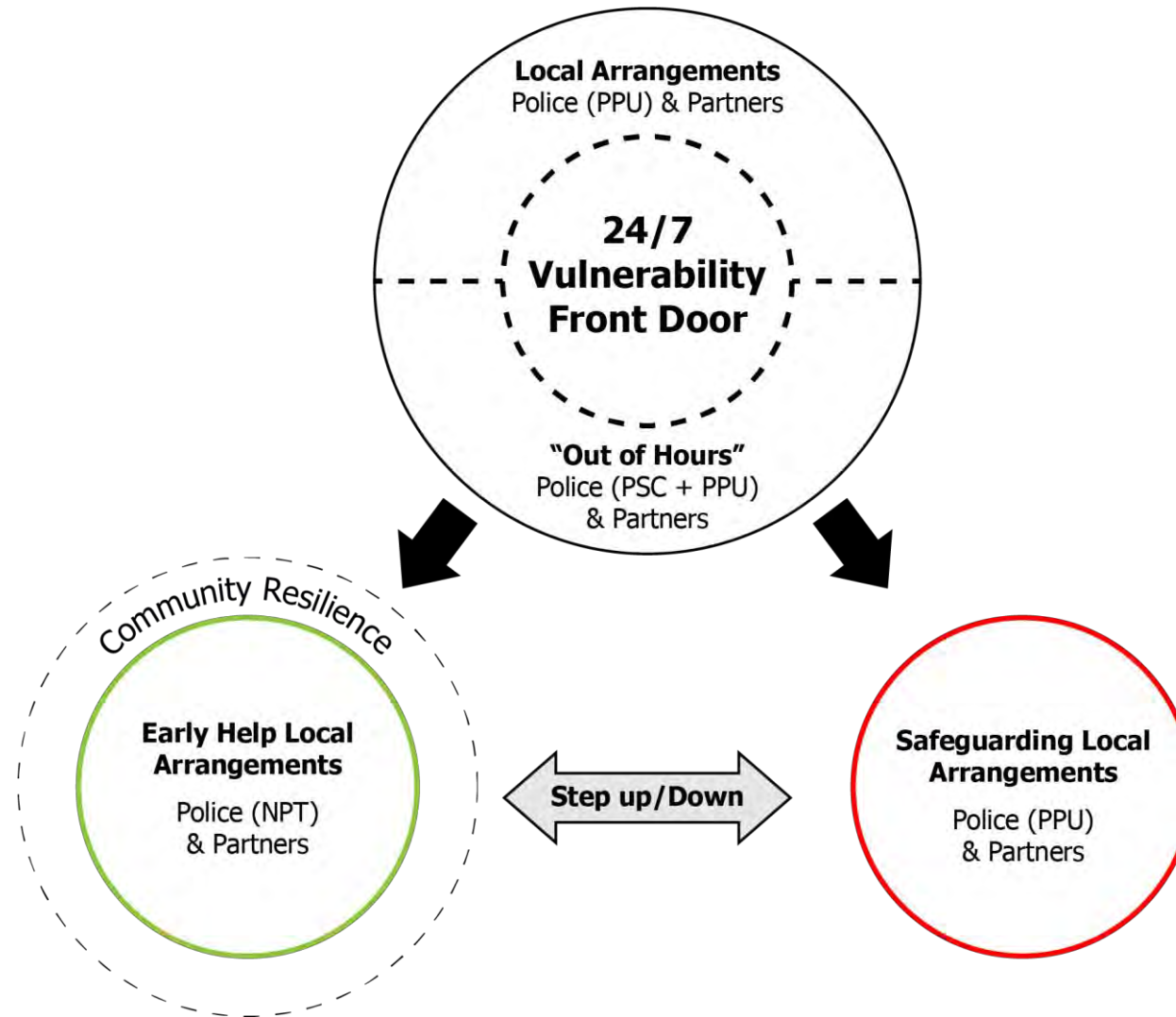
- ✓ Pathfinders in each local authority area
- ✓ One 24/7 pilot (PPU and EDT)
- ✓ Social Navigator Pilot
- ✓ ACE TIME training for 2800 Police & Partners



One 24/7 Front Door



One 24/7 Front Door





ACE Support Hub @acehubwales · Jun 10

Behind the child, there might be a struggle you can't see. A small act of kindness could change someone's life. [#TimeToBeKind](#) encourages just that - do the little things.

Find out more at aceawarewales.com/timetobekind

[#ACEsCymru](#) [#ACEaware](#)



@CCMattJukes | @swpolice

Challenges

- Variation in safeguarding understanding
- Current scope of community safety, early intervention & safeguarding
- Linking early intervention & neighbourhood policing
- Making case for NHS involvement
- Performance evaluation, data and evidence gathering
- Sustainability, legacy and transition
- Co-location, collaboration & co-operation



The Team: People and Performance

Professionalism

1st in England and Wales taking action
against offenders in sexual violence

Resilience

18% reduction in mental health
absence

Wellbeing

41,000 fewer hours lost to officer
sickness

Trust and Learning

Least complained about of 43 forces





Camau Cynnar
gyda'n Gilydd
**Early Action
Together**



South Wales
Police and Crime Commissioner
Comisiynydd yr Heddlu a Throseddu
De Cymru



GIG
CYMRU
NHS
WALES

Iechyd Cyhoeddus
Cymru
Public Health
Wales



@CCMattJukes | @swpolice