

The First International Conference on Law Enforcement and Public Health - Melbourne, Australia. 11-14 November, 2012



VICTORIA POLICE

The Drink and Drug Driving Enforcement Link to Public Health

Inspector Martin C. Boorman APM
Road Policing Drug & Alcohol Section
Victoria Police

•05

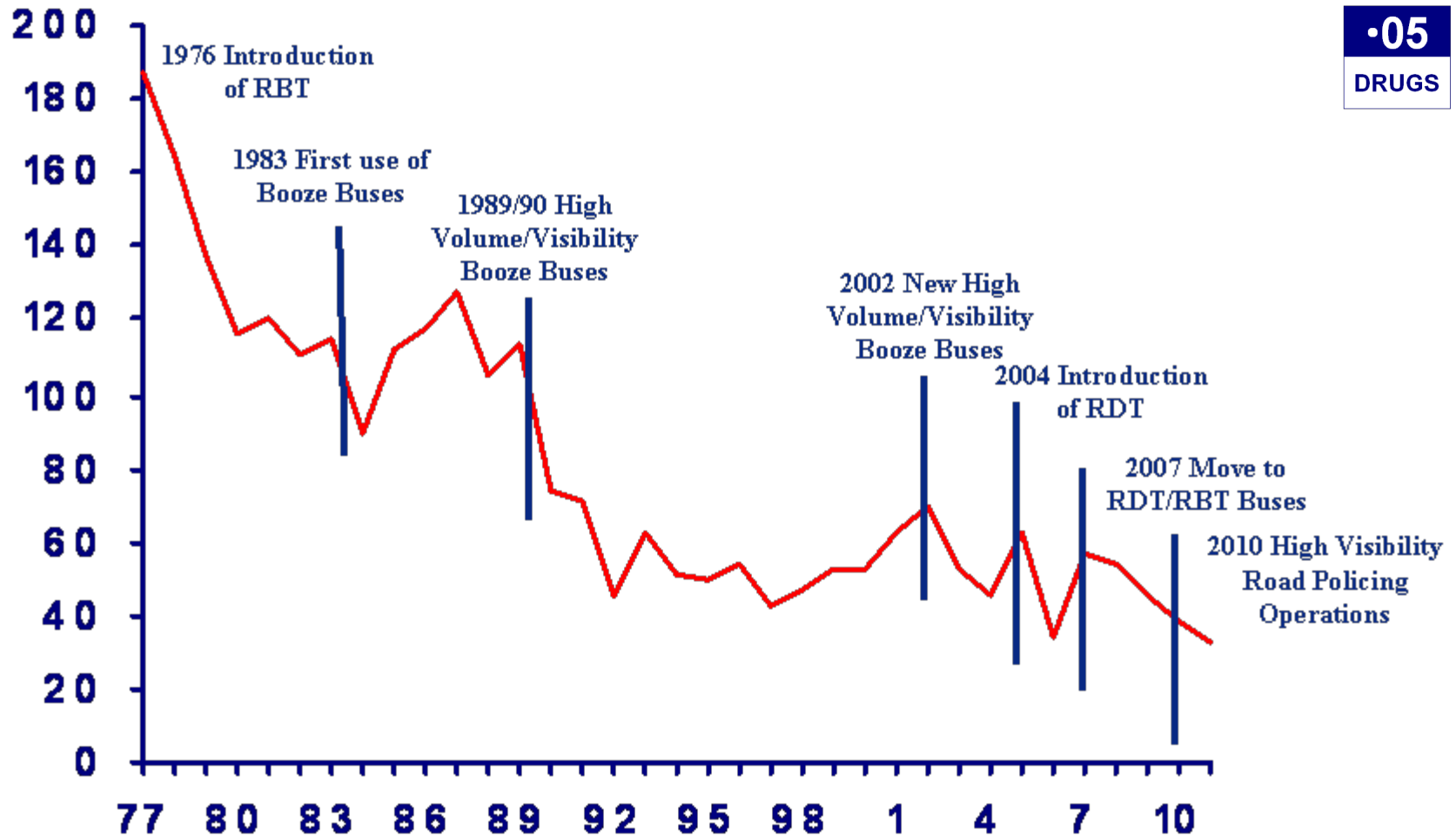
DRUGS

Activity Impact



VICTORIA POLICE

•05
DRUGS

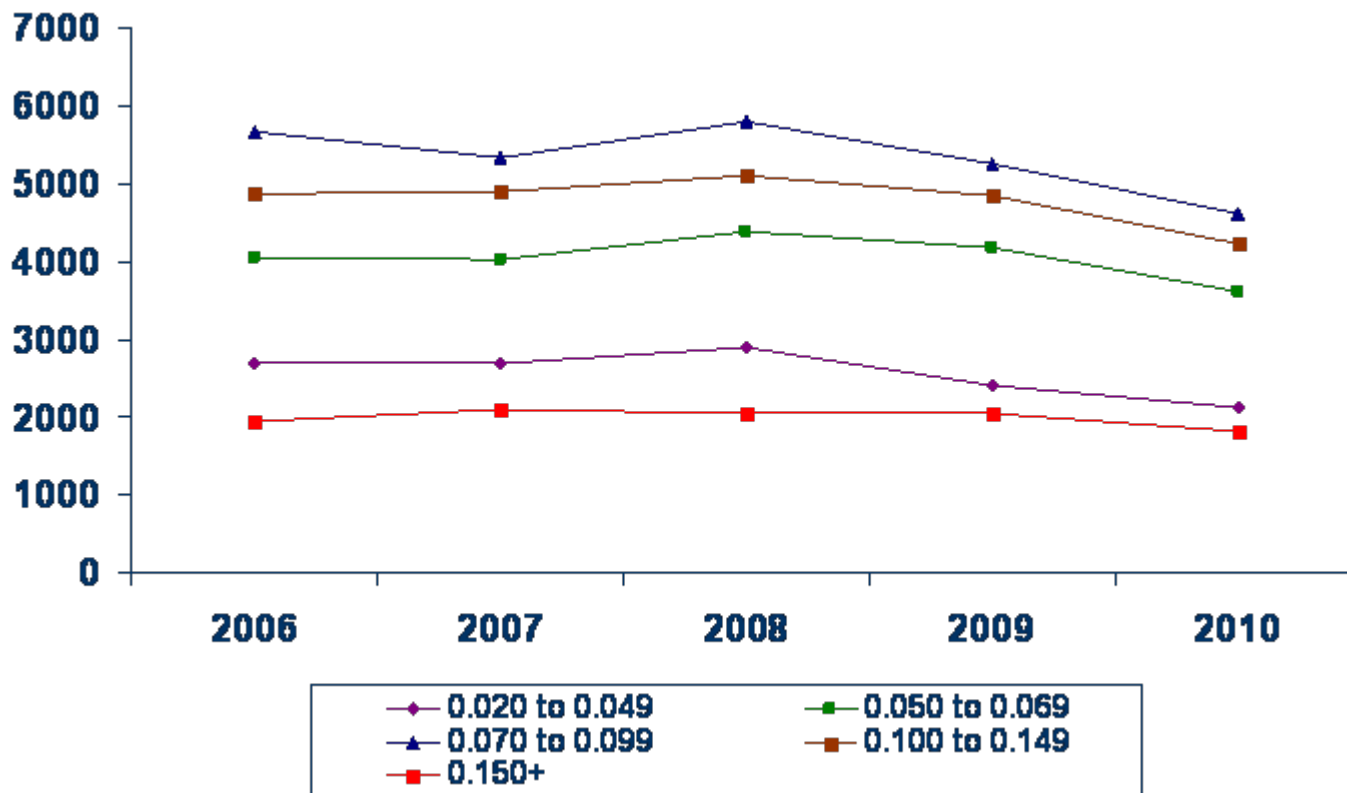


Alcohol Concentrations



VICTORIA POLICE

·05
DRUGS



Drink Driver Profile



VICTORIA POLICE

•05

DRUGS

Drink Drivers	% of Sample
Male	80
Age	
< 26	27
26 - 45	50
> 45	23
Unlicensed	8 (3 Disq.)
Unemployed	10
Recidivist	30

05-09 Aggregated Data

Alcohol Recidivism



VICTORIA POLICE

•05

DRUGS

Reading	Number	% of Total	Recidivist	%
.02-.049	2416	13	746	31
.05-.069	4195	22	1032	25
.07-.099	5299	28	1371	26
.10-.149	4867	26	1393	29
.15 & over	2070	11	784	39
Total	18847		5326	28

2009

Drug Driver Profile



VICTORIA POLICE

05

DRUGS

DWI Drivers	% of Sample
Male	79
Age	
< 26	29
26 - 45	64
> 45	7
Unlicensed	26 (9 Disq.)
Unemployed	31
Drink Drive	19
Traffic	63
Crime	73

RDT Drivers	% of Sample
Male	84
Age	
< 26	38
26 - 45	56
> 45	6
Unlicensed	7 (3 Disq.)
Unemployed	10
Drink Drive	1
Traffic	8
Crime	1

00-08 Aggregated Data

04-08 Aggregated Data

Impaired Driver Drug Type



VICTORIA POLICE

•05

DRUGS

DWI Drug Types % of sample

CNS Depressants 49

Opioids 20

THC 13

Amphetamines 9

Antidepressants 3

MDMA 2

Alcohol 0.3

Poly Drug 82

2009

RDT Drug Types

% of
sample

Methamphetamine 76

THC 29

MDMA 13

Poly Drug Use 23

2010

Injured Drivers



VICTORIA POLICE

2,929 Injured Drivers - 907 (31%) Positive to Alcohol or drugs

05

DRUGS

Alcohol Only (54%)		
Alcohol Concentration	N=490	%
0.020 to 0.049	9	1.84
0.050 to 0.069	39	7.96
0.070 to 0.099	100	20.41
0.100 to 0.149	139	28.37
0.150+	203	41.43

Illicit Drugs Only (31%)		
Drug Type	N=279	%
THC	191	68.46
MA	117	41.84
MDMA	2	0.72

Alcohol and Illicit Drugs (15%)					
Alcohol Concentration	N=138	%	Drug Type	N=138	%
0.020 to 0.049	2	1.45%	THC	127	92.03%
0.050 to 0.069	19	13.77%	MA	23	16.67%
0.070 to 0.099	26	18.84%	MDMA	0	0.00%
0.100 to 0.149	47	34.06%			
0.150+	44	31.88%			

2011

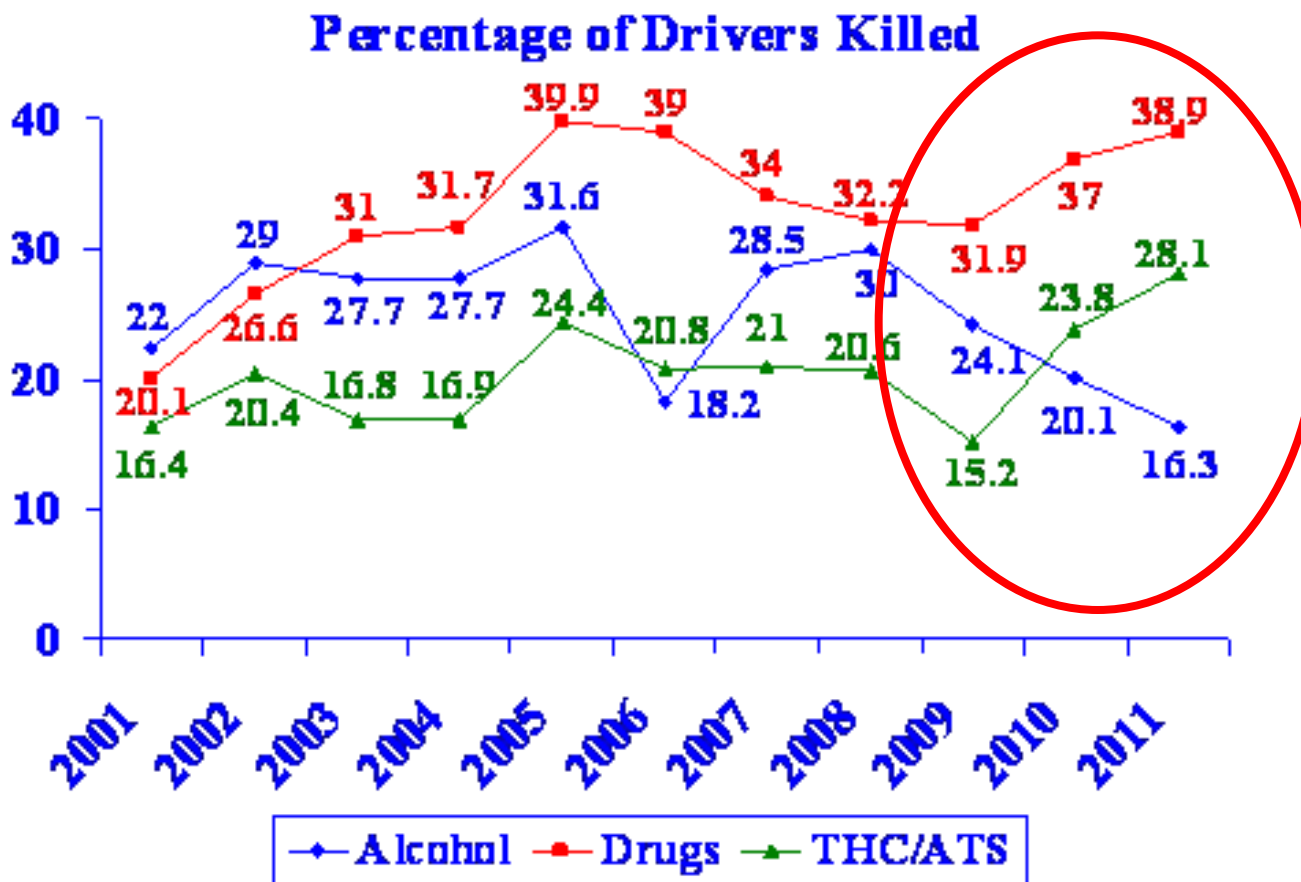
Alcohol & Drug Involvement



VICTORIA POLICE

•05

DRUGS



Thank You



VICTORIA POLICE



T2013 International Conference
25-28 August 2013
Brisbane, Queensland, Australia

20th International Council on Alcohol, Drugs & Traffic Safety Conference



www.t2013.com

The complex block contains the T2013 conference logo, which includes a stylized map of Australia with a bar chart and a pie chart. Below the logo is the text 'T2013 International Conference 25-28 August 2013 Brisbane, Queensland, Australia'. A dark orange banner below this text reads '20th International Council on Alcohol, Drugs & Traffic Safety Conference'. The main part of the block is a nighttime photograph of the Brisbane city skyline, with numerous skyscrapers illuminated and their lights reflecting on the water of the Brisbane River. In the foreground, there are palm trees and some buildings. At the bottom of the block, a green banner contains the website address 'www.t2013.com'.

•05

DRUGS