

# Network against domestic abuse in Berlin: from intervention to prevention

---

**Stefanie Giljohann, Police Berlin**  
**Dr. Catharina Vogt, German Police University**

# Proactive approach

---

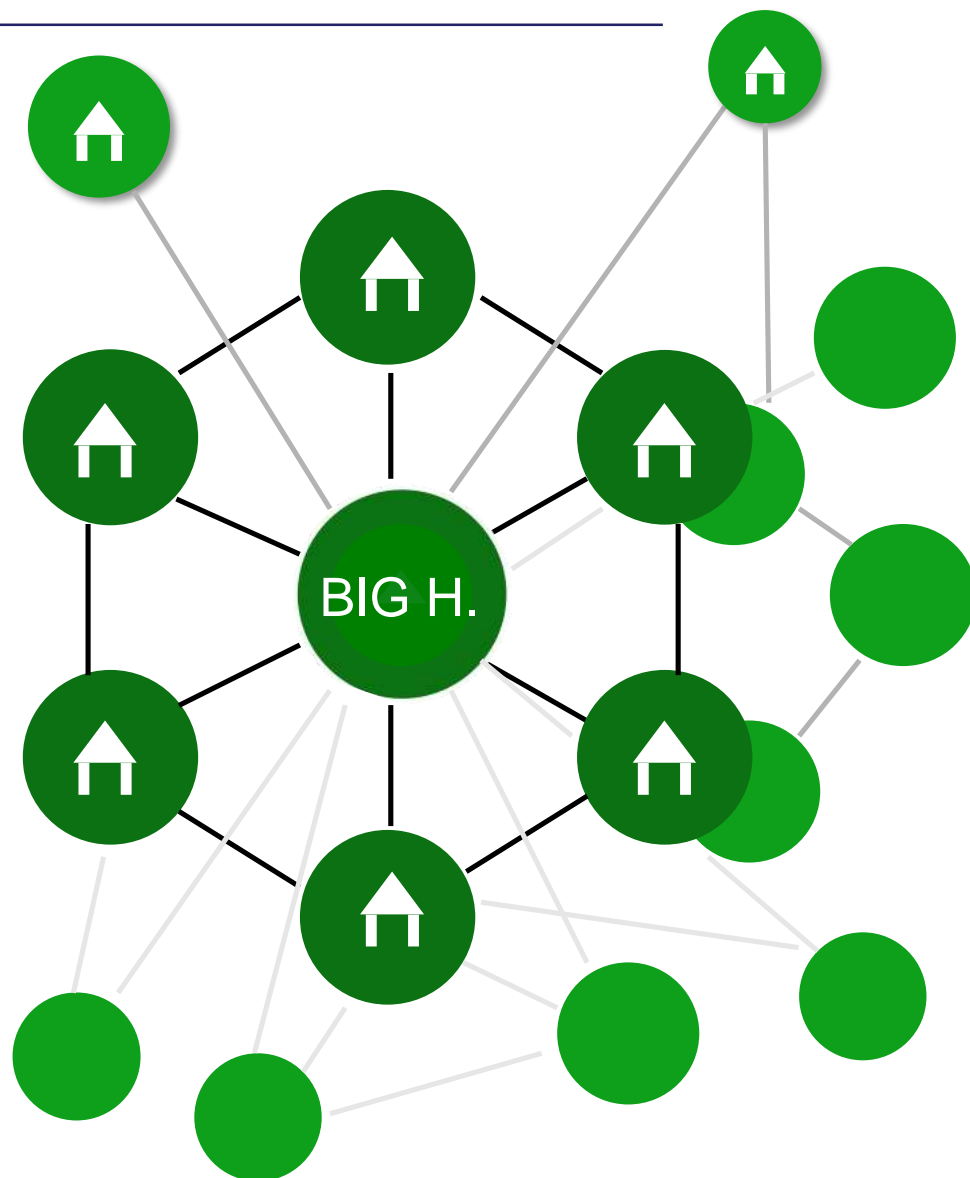
Police Berlin



Berlin initiative against  
violence towards women

# BIG Hotline

- Proactive approach
- Hotline counselling
- Mobile interventions
- Coordination of the hotline service
- Coordination of the placement in shelters
- Coordination of exchange between all relevant persons and agencies in this field



## Some statistics: Berlin (2018)

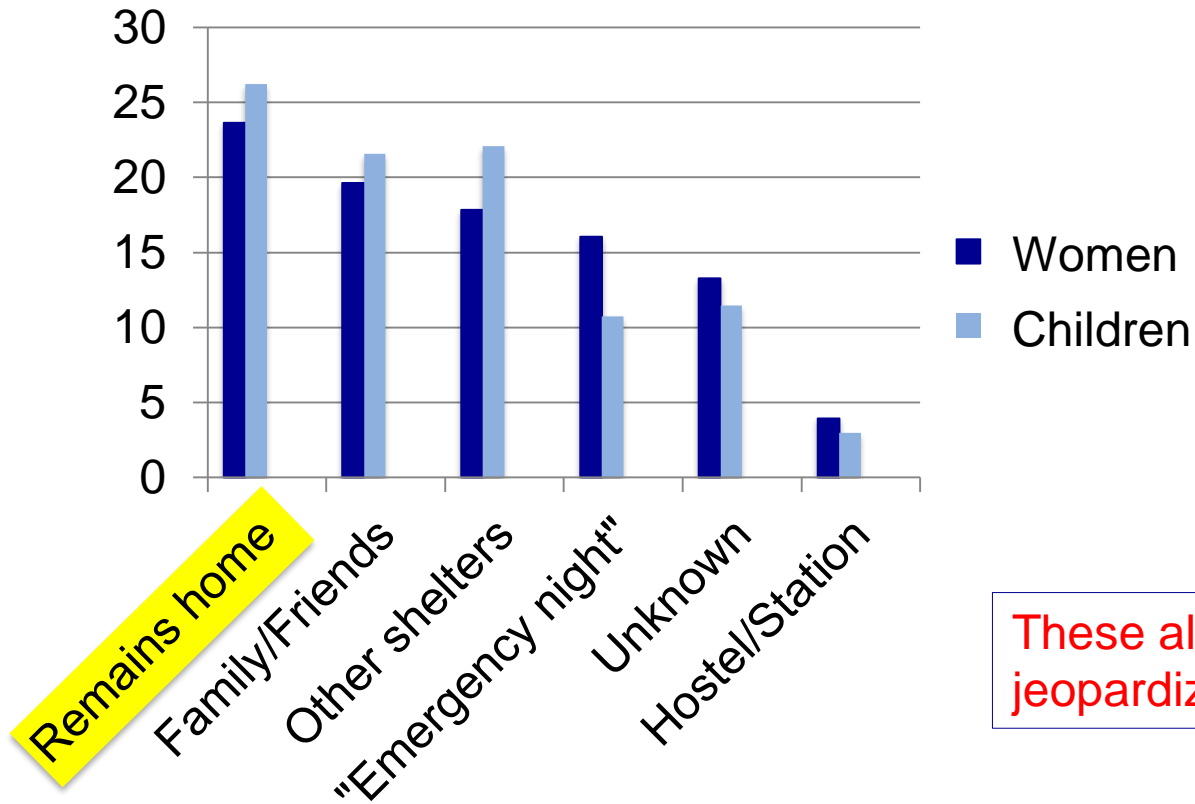
---

- Crime statistics of DA: 15.665 victims (+7%)
- 301 places in Berlin shelters (versus “500 needed ones“)
- The demand of places keeps increasing
- The amount of women and children that do not find shelter keeps increasing:

	2018	2017	2016	2015	2014
Women	1.341	1.071	544	556	759
Children	1.586	1.174	711	827	1.042

# Where do 'rejected' victims find refuge?

The destinations of the 1.341 women and 1.586 children, who could not be placed in a shelter in Berlin (2018):



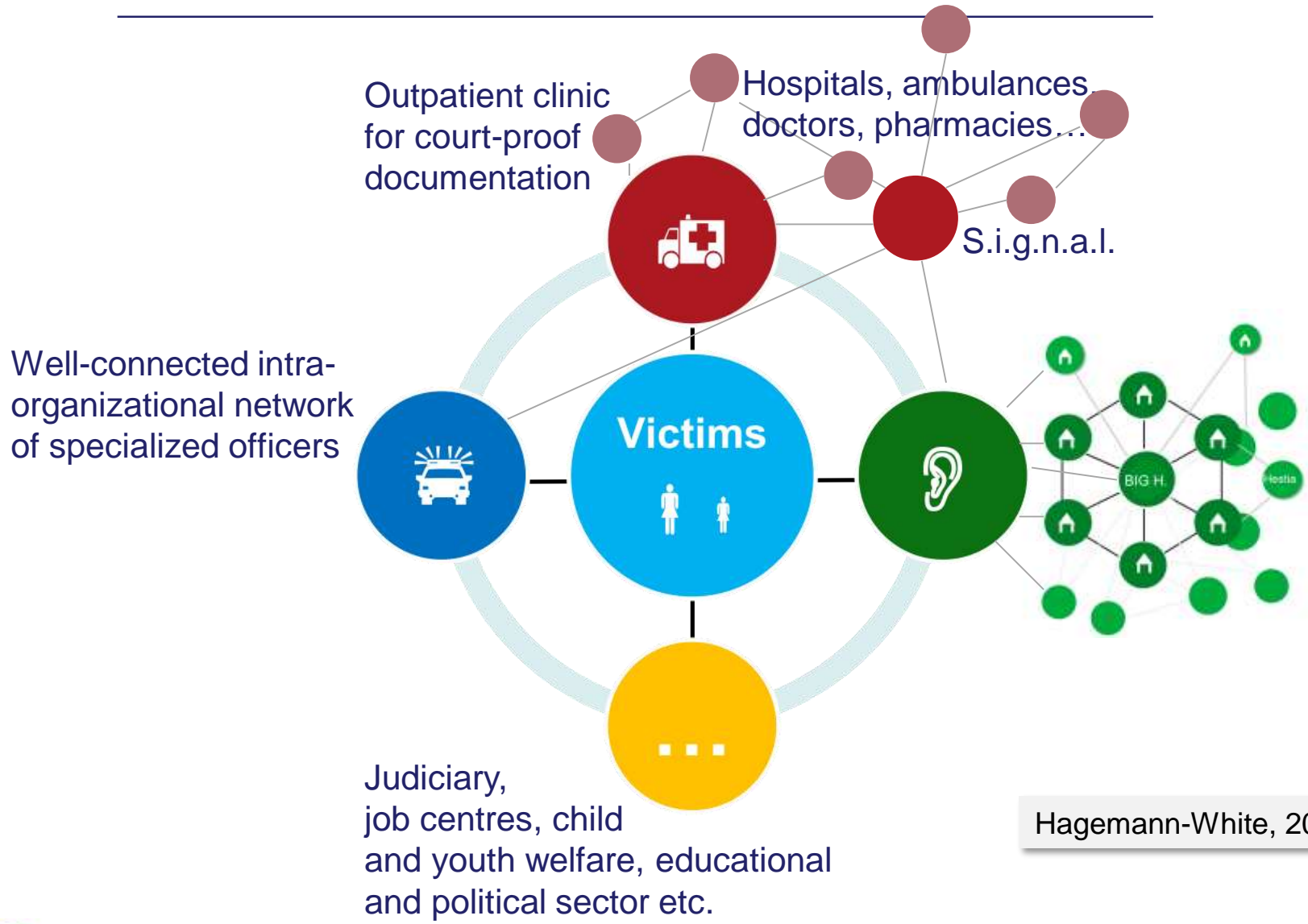
**These alternatives may jeopardize the victim's safety.**

# Lack of shelters: Challenges for the police

---

- BIG can help only to a limited extent
- Language barriers
- Lack of structure for basic needs (food, room etc.)
- Two tasks at one time (intervention + „social work“)
- Dealing with own emotions
  
- The duration of such an intervention!
- **Being (personally) responsible until a solution is found**

# Chain of intervention



Hagemann-White, 2017

## A strong network can:

---



- Protect and support victims more effectively
- Share workload and knowledge
- Support also the frontline responders
- Have a loud voice on a political level





# Get connected!

---



[stefanie.giljohann@polizei.berlin.de](mailto:stefanie.giljohann@polizei.berlin.de)



[www.improdova.eu](http://www.improdova.eu)



[@improdova](https://twitter.com/improdova)



# BIG

## BIG Hotline



## BIG Prevention

At primary schools

Target group: Pupils,  
teachers and parents

## BIG Coordination

Identifies gaps in the  
system, searches and  
suggests solutions

Coordinates at all  
levels in all relevant  
fields (in expert  
groups, regular panels  
and round tables)

Involved in education  
of DA professionals

# The Domestic Violence (DV) Network of the Berlin Police

