



GGD

Amsterdam



Victims of sexual assault seen by Amsterdam forensic nurses

Tina Dorn, PhD, MA, MPH

Public Health Service Amsterdam

Sexual assault nursing in Amsterdam

- Since 2012: Nurse assists forensic physician during medical examination of victim
- Nurse coordinates medical, forensic and psychological aftercare
- Before 2012: Non-integration of post-assault services, various locations, waiting lists.
- Coordinated assistance is more effective in facilitating recovery and increasing chances of the offender's apprehension
- Marijke Eppink

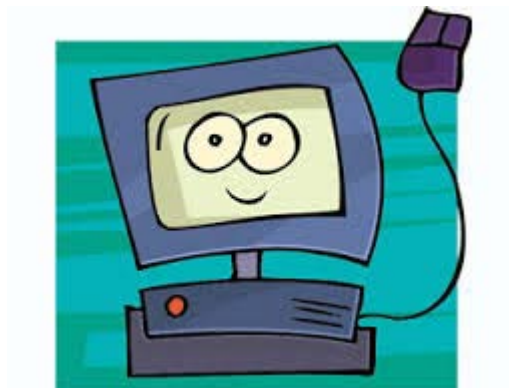
Research questions

1. Characteristics of victims?
2. Characteristics of assault/assailant?
3. Work load forensic nurses?
4. Use of post-assault professional services

Why?

Information is necessary to improve the current service!

Method



Formatus

Amsterdam Amstelland

Aa

Di

Exports

Maand vanaf

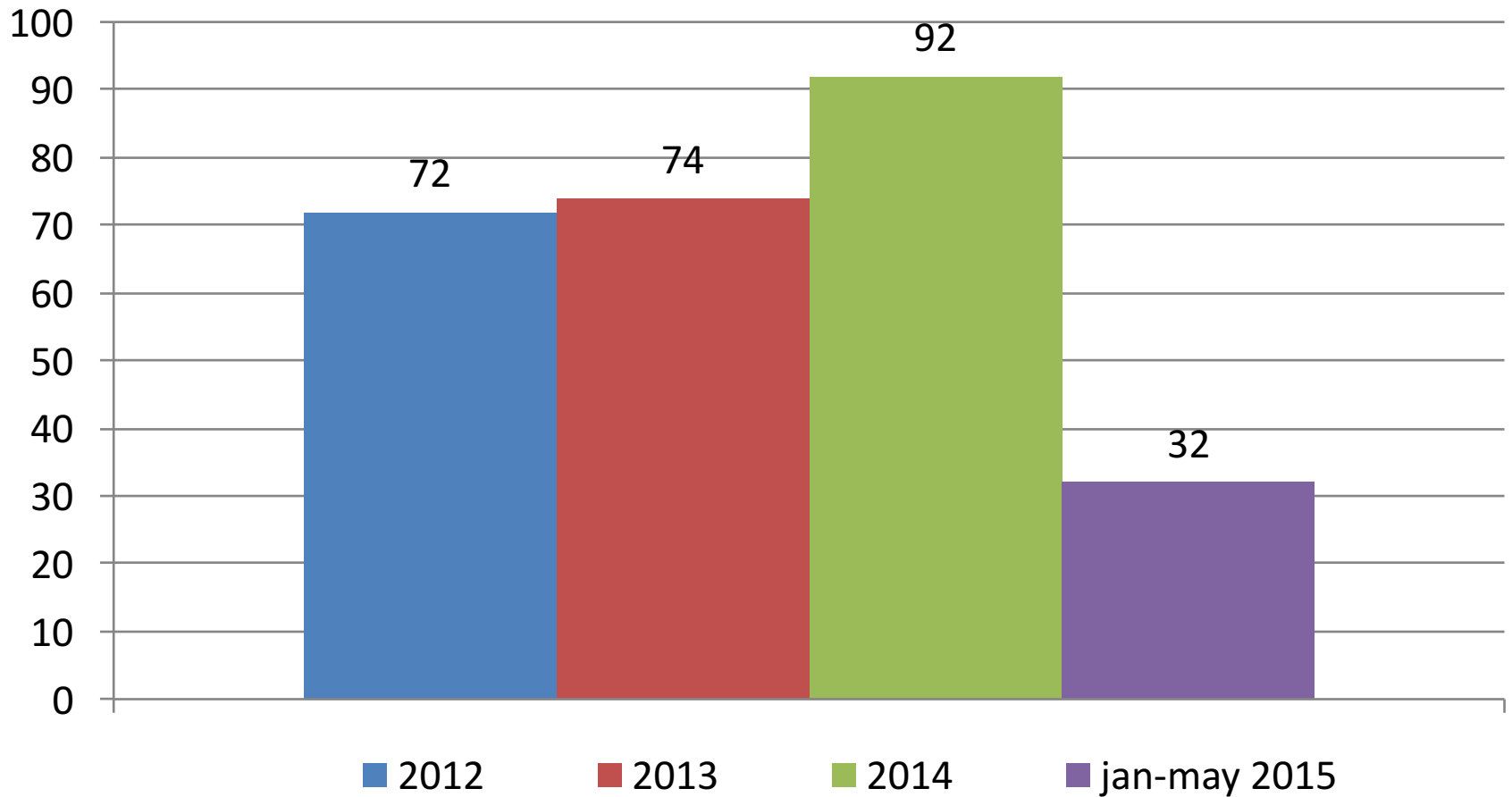
oktober 2015



Maand t/m

oktober 2015

Study sample: clients per year



= victims who contacted the police and who underwent a forensic medical examination (within one week post-assault)

Small percentage through STD clinic and others

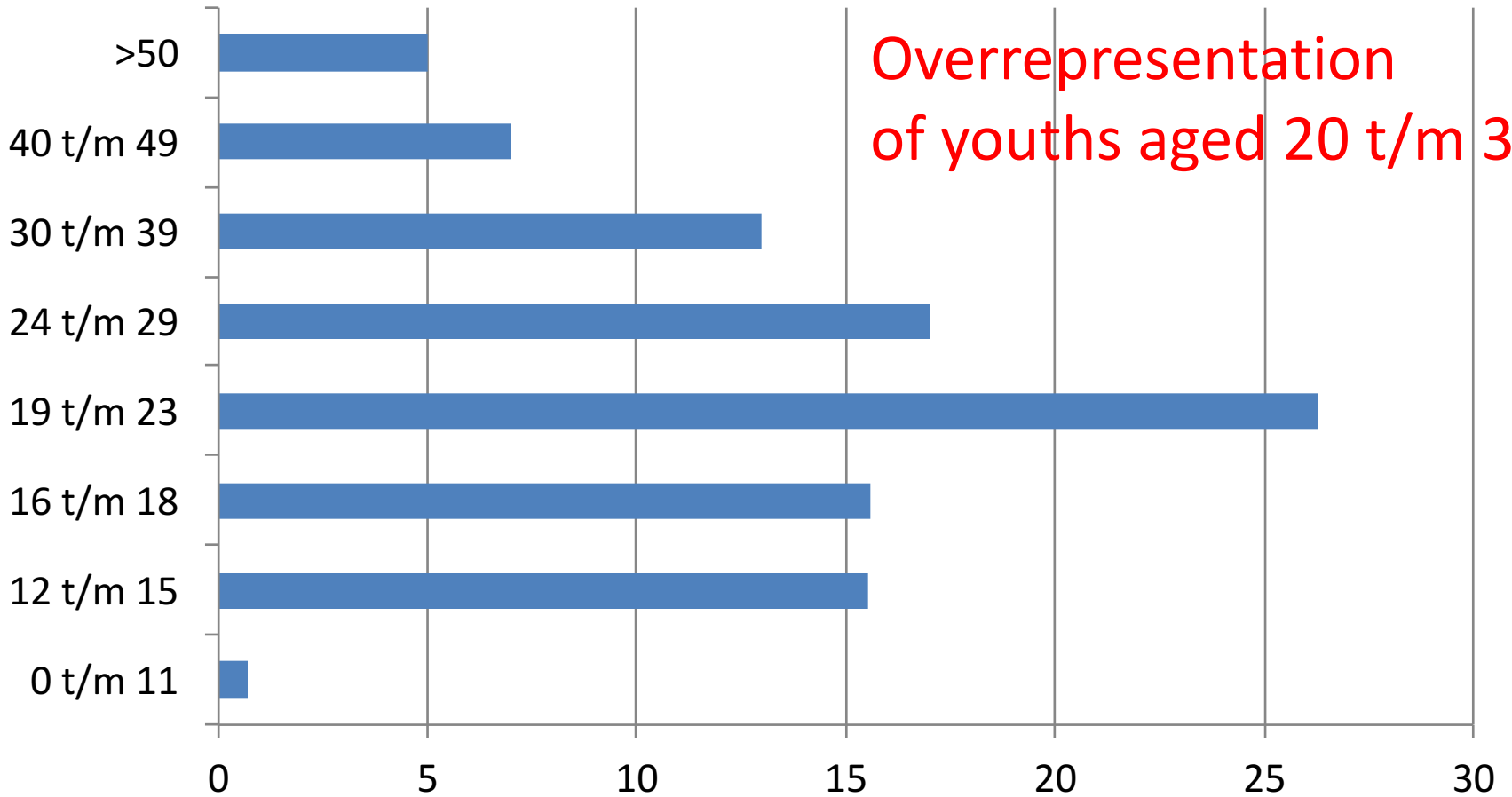
Who are these n=270 victims?



Males/Females

97% ♀

Age (%)

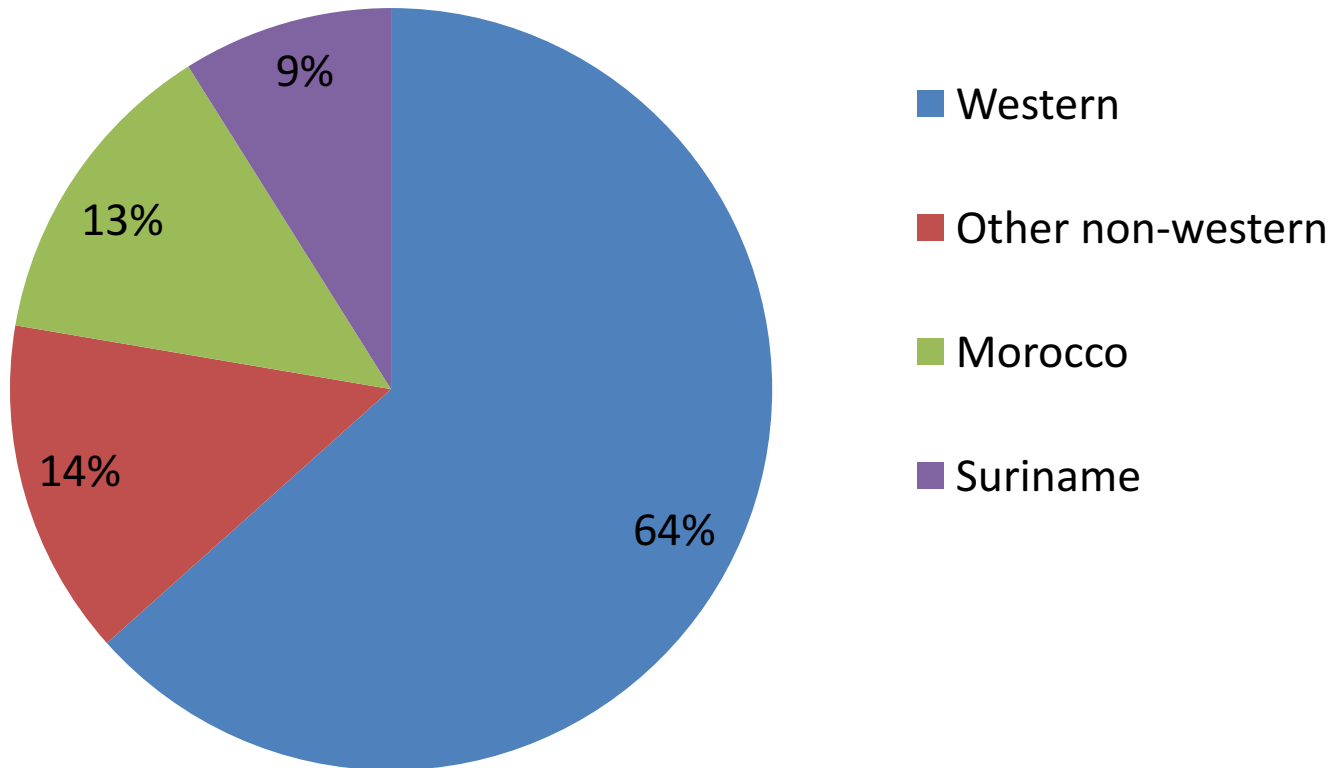


Where do they live? (n=124)

- Amsterdam: 57%
- Wider Amsterdam area: 8,9%
- Netherlands (other regions): 9%
- Abroad: 11%
- Unknown: 15%



Ethnic background (n=124)



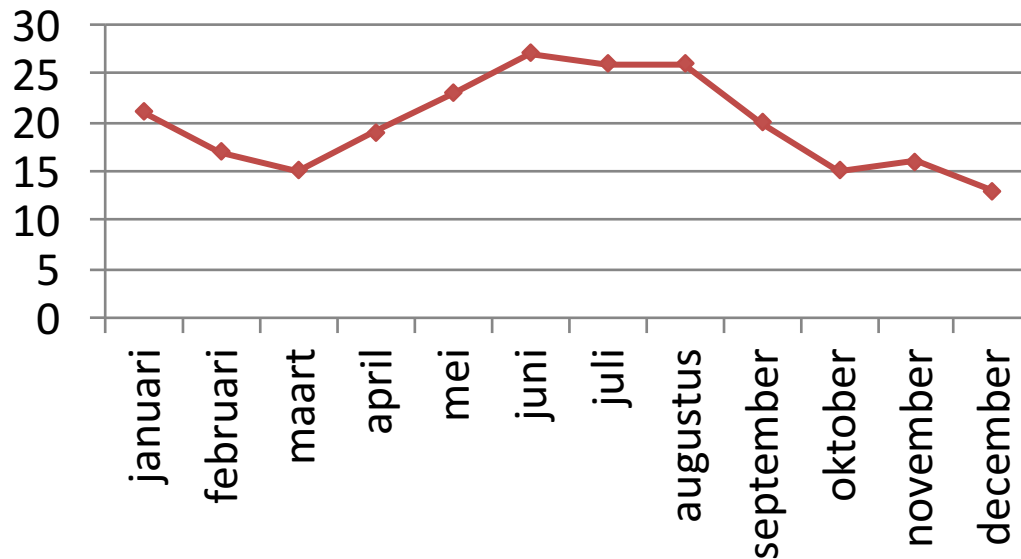
western clients well represented

History clients (n=124)

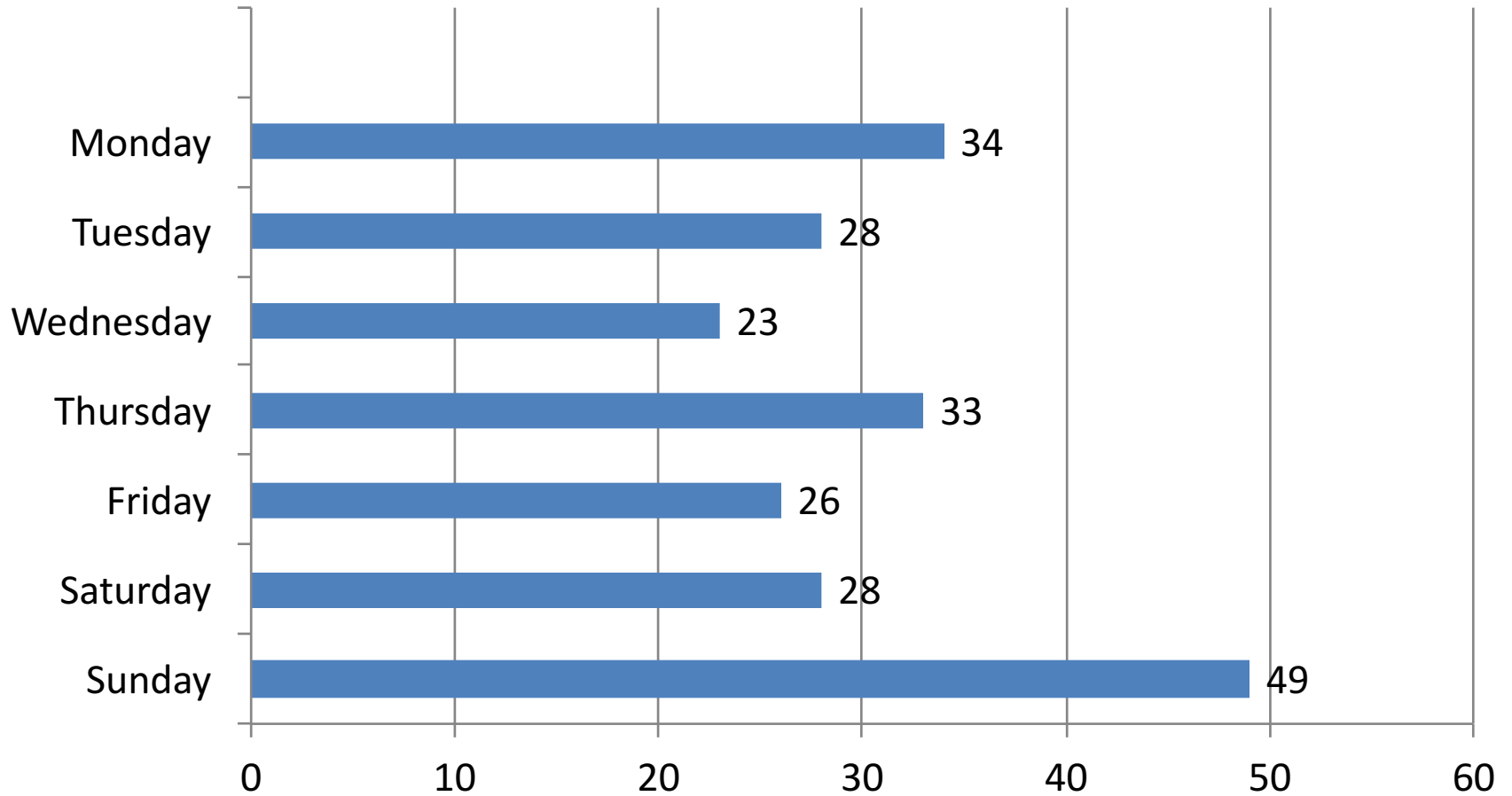
	%
Prior sexual abuse	26
Prior physical abuse	15
Already receiving help	34
Prior trauma-related mental health care use	16
Prior substance abuse	23
Under influence of drugs and/or alcohol when assaulted	44
Prior addiction-related health care use	9

Assault characteristics

- Stranger assault: 54%
- Rape: 93%
- Increase during summer months



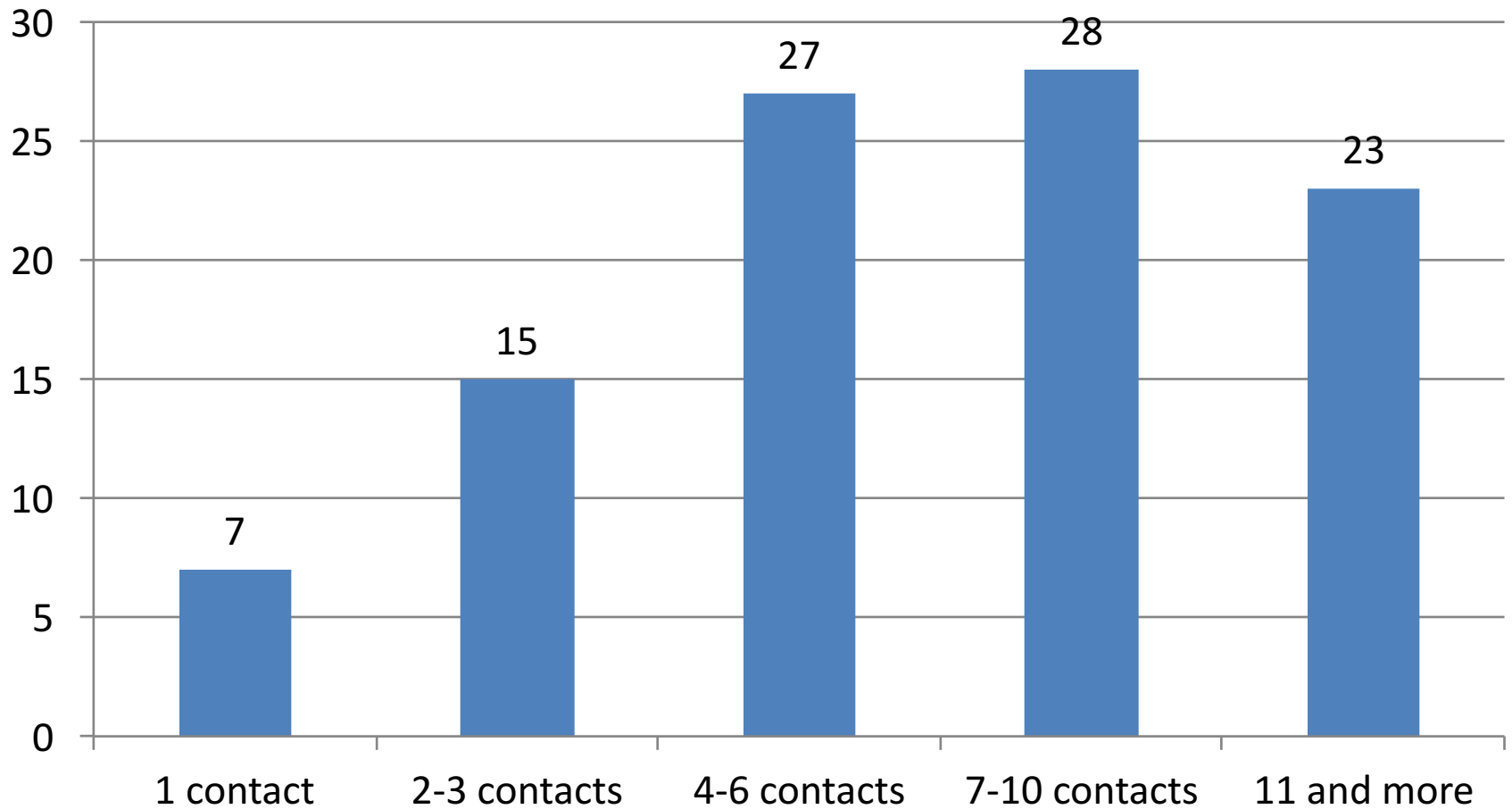
Forensic medical examination by weekday



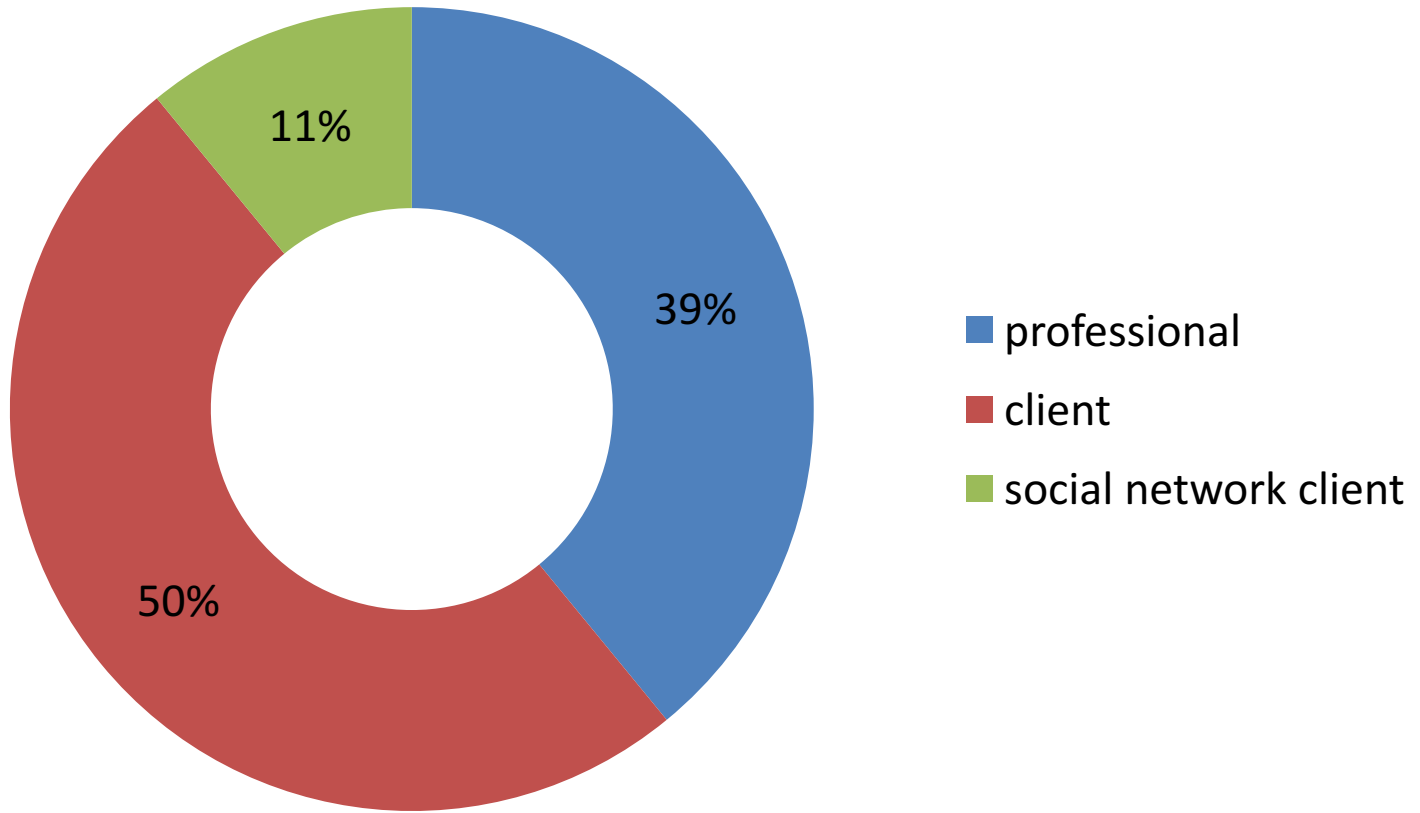
Work load forensic nurse



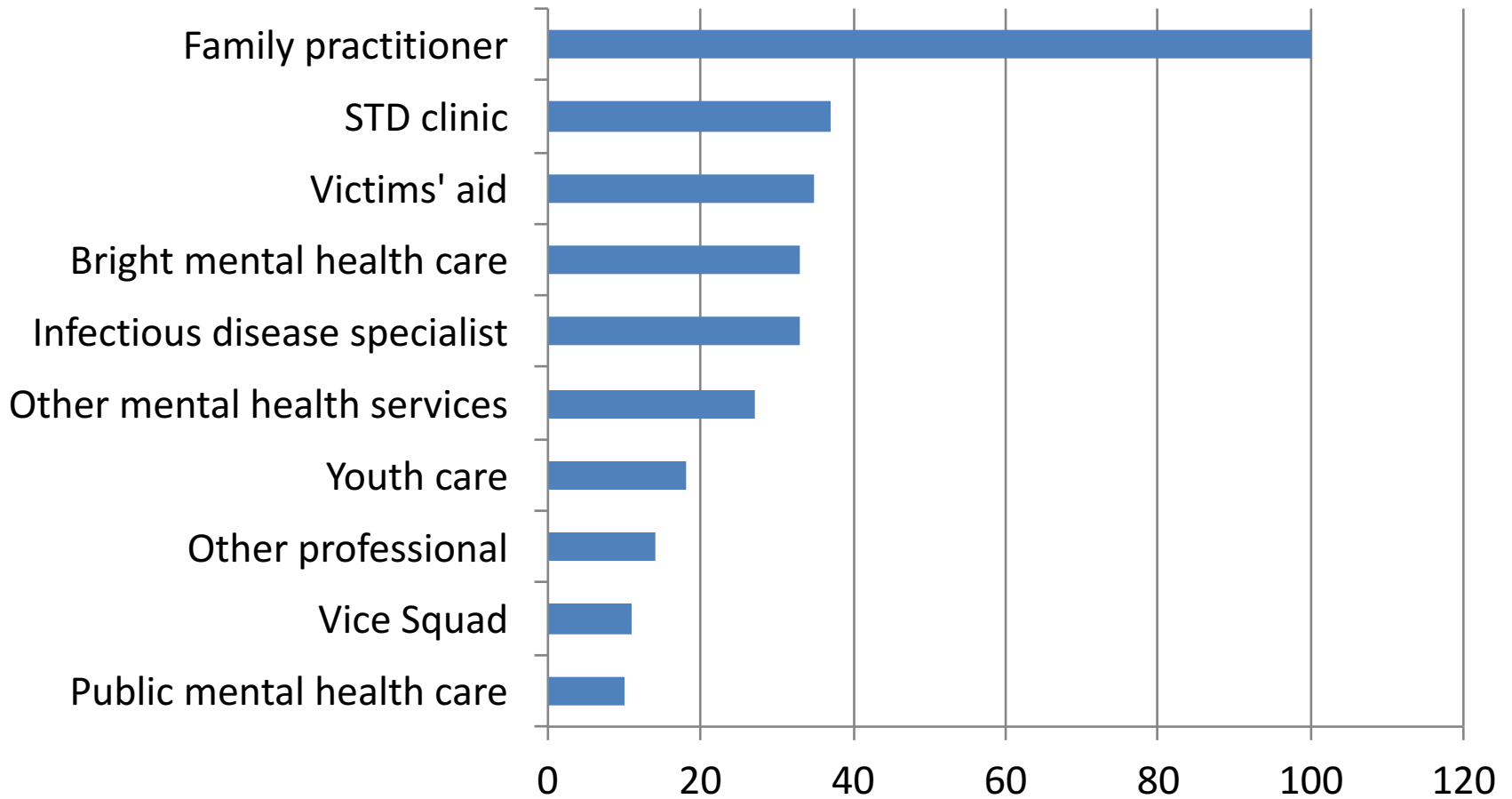
Number of contacts per client (random sample)



Contacts with...



Contacts with professionals



- 25% is being referred to mental health services
- 28% is considered as 'drop-out' by forensic nurse
 - Avoidance as coping strategy?
 - Different approach needed by forensic nurse?



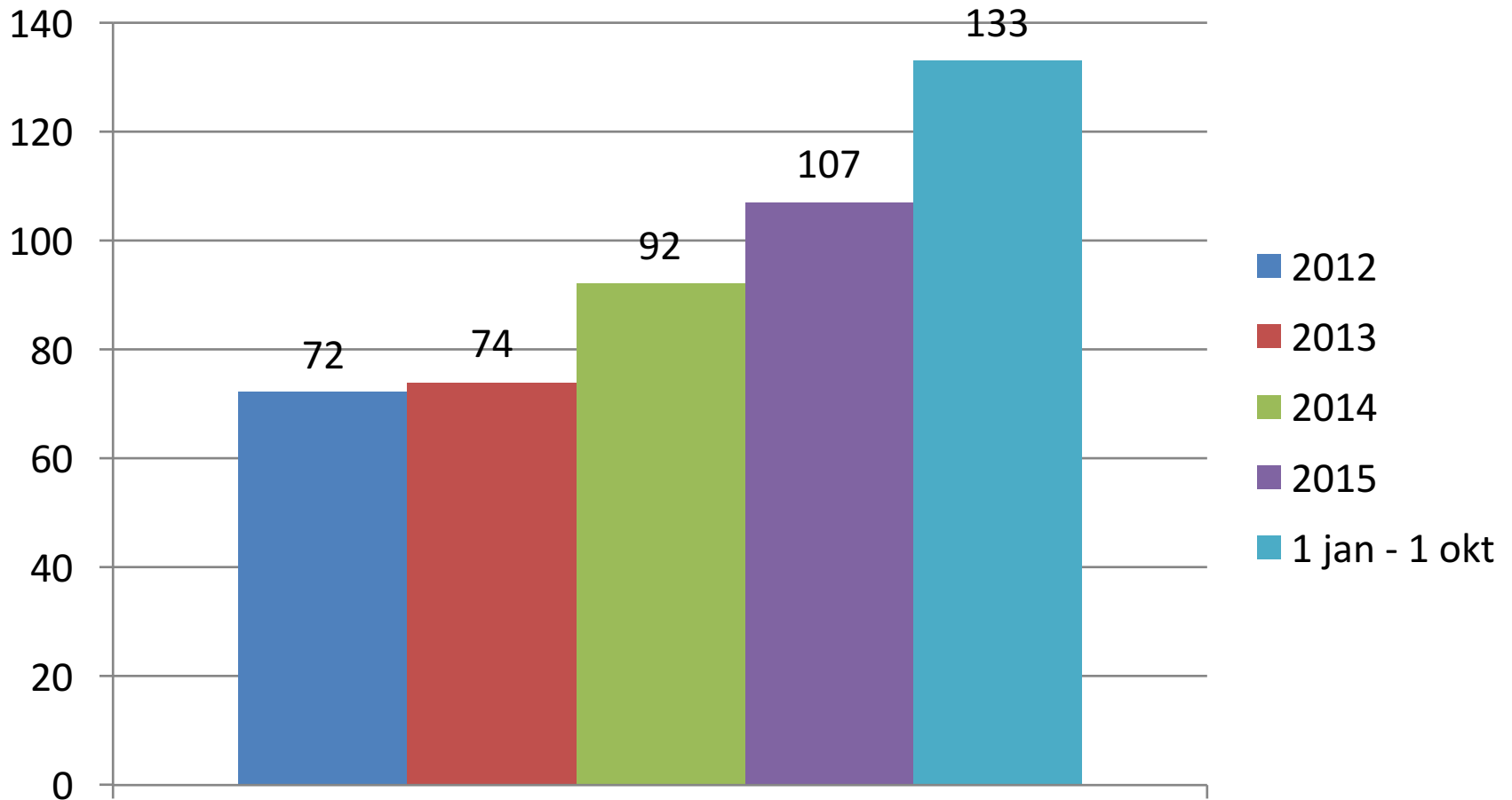
Wij kunnen je helpen
na een aanranding
of verkrachting

#belsnel 0800 0188



- From pilot project to establishment of sexual assault center
- Proper funding
- Public campaigns announcing existence of center
- Victims can get help without first contacting police

Number of (new) clients per year



Future research questions...

1. How many victims officially report to the police?
2. More official reports since establishment of sexual assault center?
3. Improved prosecution of assailants?



Thank you!