



Public Health
England



Law Enforcement and Public Health Conference 2016: Amsterdam

WHO Europe Prison Health Research & Engagement Network

#WEPHREN

Dr. Éamonn O'Moore

National Lead for Health & Justice, PHE and
Director UK CC WHO Health in Prisons
Programme (WHO HIPP)





WHO Health in Prisons Programme (WHO HIPP)

- In 1995, **WHO (European Region)** and the **UK** established a network for the exchange of experience in tackling health problems in prisons.
- From this network emerged the **WHO Health in Prisons Programme (WHO HIPP)**, which now includes 47 member states of the 53 from the WHO EURO region.
- **WHO Europe is the only WHO Region** to have a prisons' programme so in many ways provides global leadership in the area of health & justice.

- WHO HIPP's main activity is to give technical advice to Member States on:
- a. the development of prison health systems and their links with public health systems;
 - b. technical issues related to **communicable diseases (especially HIV/AIDS, hepatitis and tuberculosis)**, illicit drug use (including substitution therapy and harm reduction) and mental health.

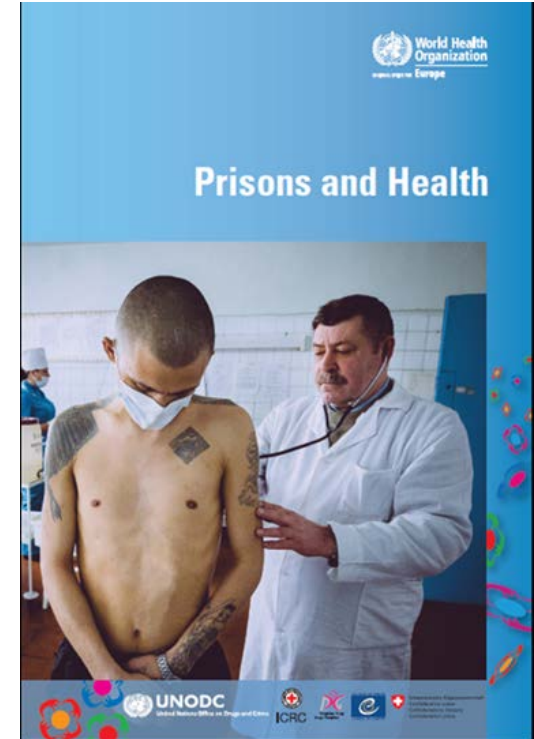
For more information & key publications go to <http://www.euro.who.int/en/health-topics/health-determinants/prisons-and-health/who-health-in-prisons-programme-hipp>



Public Health
England



<http://www.euro.who.int/en/publications/abstracts/good-governance-for-prison-health-in-the-21st-century.-a-policy-brief-on-the-organization-of-prison-health-2013>



<http://www.euro.who.int/en/health-topics/health-determinants/prisons-and-health/publications/2014/prisons-and-health>



Mind the evidence gap.....

- **Gaps in evidence-base** to support effective, efficient, cost-effective and high quality healthcare in prisons and other justice settings.
- **Active and appropriate research programmes required.**
- **Disparity** between growth in prison health research from countries such as the USA, Canada and Australia Vs the WHO European Region.
- **Variation** in quality & quantity of prison health research in WHO EURO Member States.





From 'Grey to Light'.....

- Even where research is conducted, it is often 'under-powered' and/or methodologically weak and/or not published in the peer-reviewed literature resulting in results remaining in the 'grey literature'- making it inaccessible to other researchers and those developing the evidence base for prison health.
- Our ambition is to bring research into the 'light' of publication and to support dissemination.





Why do research in prisons?

- To improve understanding of health needs of people in prison;
- To improve understanding of health services in prisons;
- To enable health service evaluation and support health improvement;
- To provide evidence of effectiveness to commissioners, providers and policy makers including cost-effectiveness and efficiency;
- To allow international comparisons;
- To identify and promote good practice;
- To improve quality of research outputs through improve research methodology including collaborations, national and international;
- To improve the quality of healthcare and reduce health inequalities.

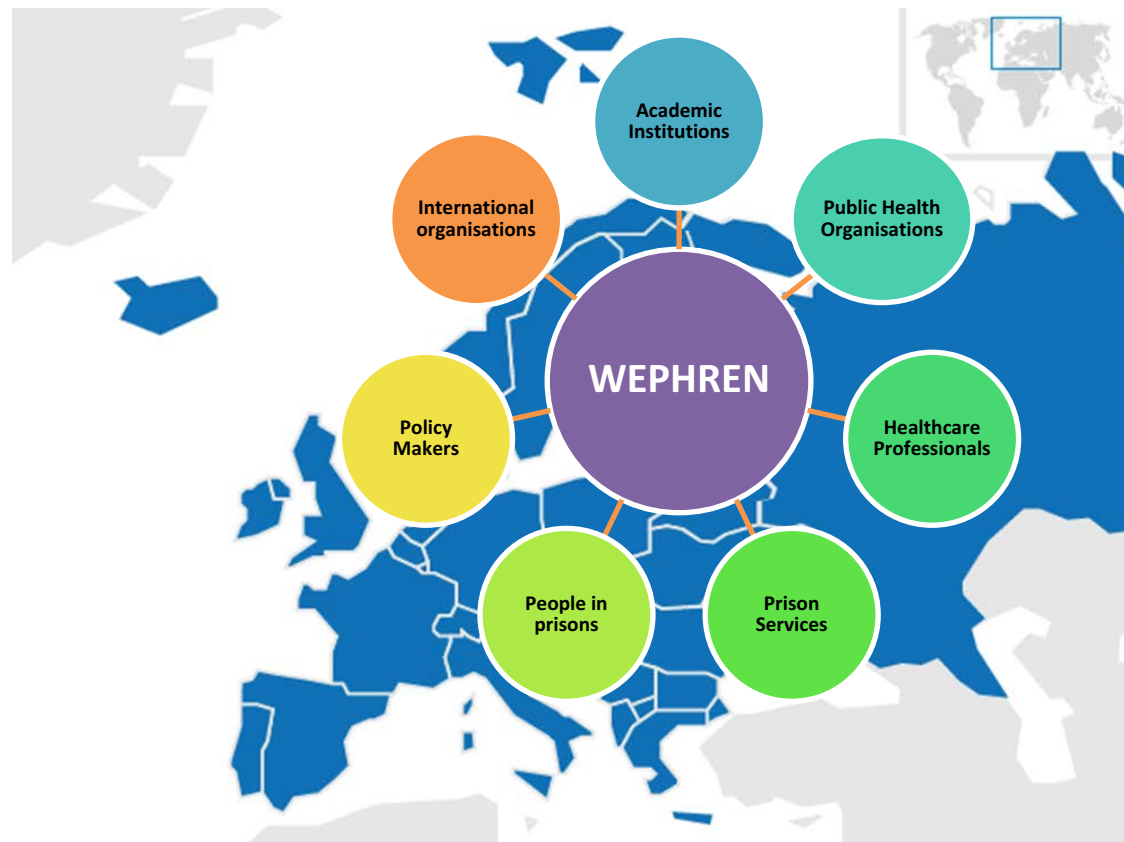


A research and engagement strategy for prison health in WHO Europe Region

- Has great potential to help develop health service provision for prisoners and **to improve the health** and wellbeing of prisoners
- Requires a **capacity building programme** to develop skills and resources in all Member States ;
- An **active network of collaborators** to enable joint research initiatives including actively seeking funding for collaborative international programmes;
- Support to bring papers to publication in peer-reviewed journals.
- **Requires support** to get established, develop and grow.



WHO Europe Prison Health Research and Engagement Network





WEPHREN is providing

A **forum for all stakeholders** interested in prison health across the European Region to exchange ideas and to work together;

A forum for researchers to **develop collaborative multi-centre research proposals** across the Region;

A means of **disseminating important research findings** across the Region;

A **platform for developing skills** of health professionals and researchers;

A vehicle to **drive development of effective collaborative networks** within and between Member States;

An opportunity for supported **professional development** of researchers, healthcare professionals and other collaborators;

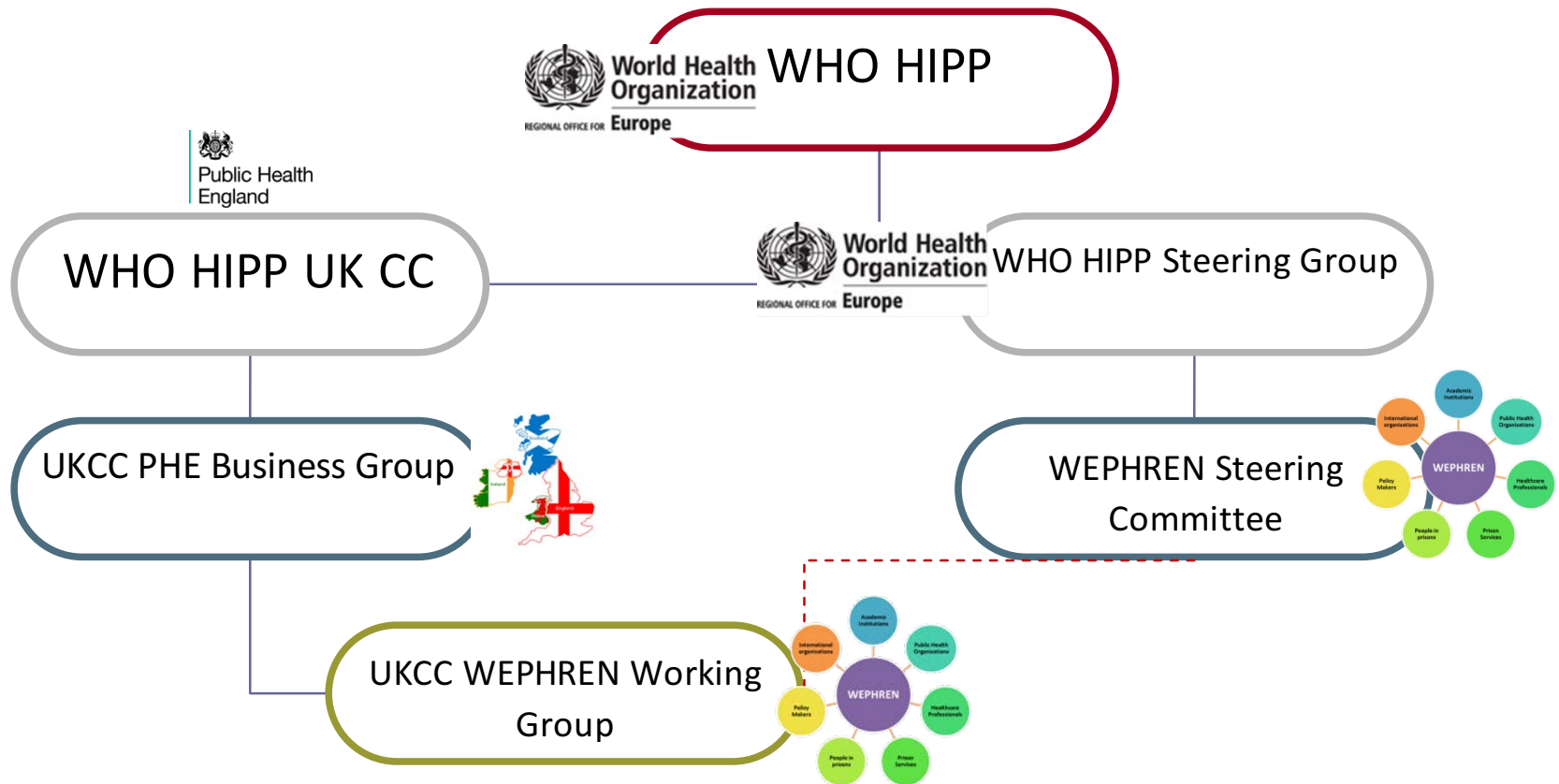
An effective means of **addressing inequities in research and professional development** across the European Region

Global leadership for WHO Europe in prison research.





WEPHREN Steering Committee





Members of the WEPHREN Steering Committee

- Carole Dromer, ICRC
- Juma Khudonazarov
- Lara Tavoschi, ECDC
- Heino Stöver
- Dagmar Hedrich, EMCDDA
- Linda Montanari, EMCDDA
- José Manuel Arroyo Cobo
- Lesley Graham
- Antti-Jussi Ämällä
- Roberto Monarca
- Lars Møller, WHO
- Emma Plugge
- Éamonn O'Moore



ICRC





Flying the flag of WEPHREN around the world: Global leadership & engagement outside of WHO Europe

- Brazil
- Chile
- Canada
- America
- Australia
- South Asia





Public Health
England



World Health
Organization

REGIONAL OFFICE FOR
Europe

Contact details

WEPHREN@phe.gov.uk

Health&justice@phe.gov.uk

eamonn.o'moore@phe.gov.uk