

OVERLAY OF PUBLIC SAFETY AND PUBLIC HEALTH DRUG BURDEN DATA TO INFORM PREVENTION AND SAFETY INTERVENTIONS

Terry Bunn, PhD, Dana Quesinberry, JD, Ashley Bush, DrPH

Kentucky Injury Prevention and Research Center, University of Kentucky as bona fide agent for Kentucky Department for Public Health



DISCLAIMER

- This work was supported by Cooperative Agreement Number 6 NU17CE002732-04 funded by the Centers for Disease Control and Prevention (CDC). Its contents are solely the responsibility of the authors and do not necessarily represent the official views of the Centers for Disease Control and Prevention or the Department of Health and Human Services.

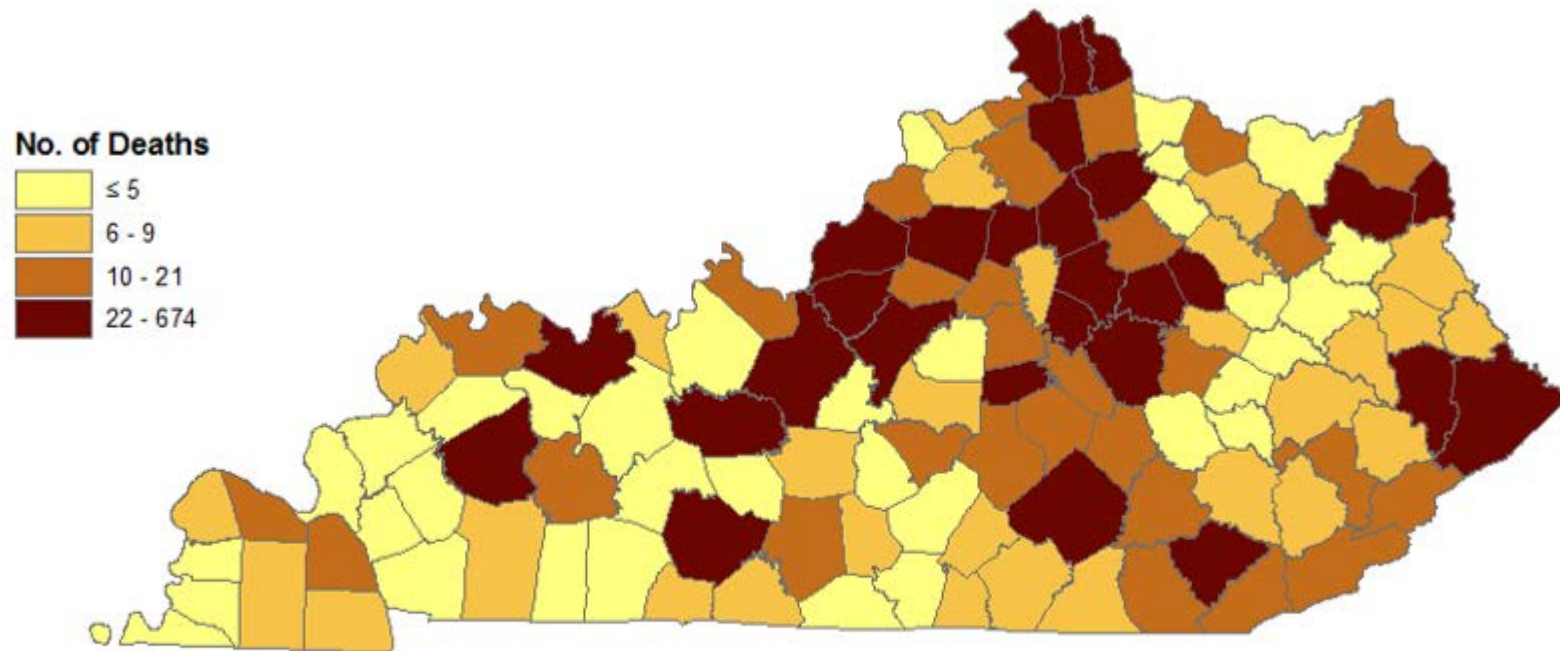
KIPRC/KSP PARTNERSHIP

- MOU to receive data extracts of drug crime and drug submission data
 - Date of birth; gender; county of residence; county of offense; county source of submission
- KIPRC transmittal of drug-related emergency department, inpatient hospitalization, death, and prescribed controlled substance aggregated data to KSP
- KIPRC production of data briefs
- Regular Meetings
- Exchange of Personnel



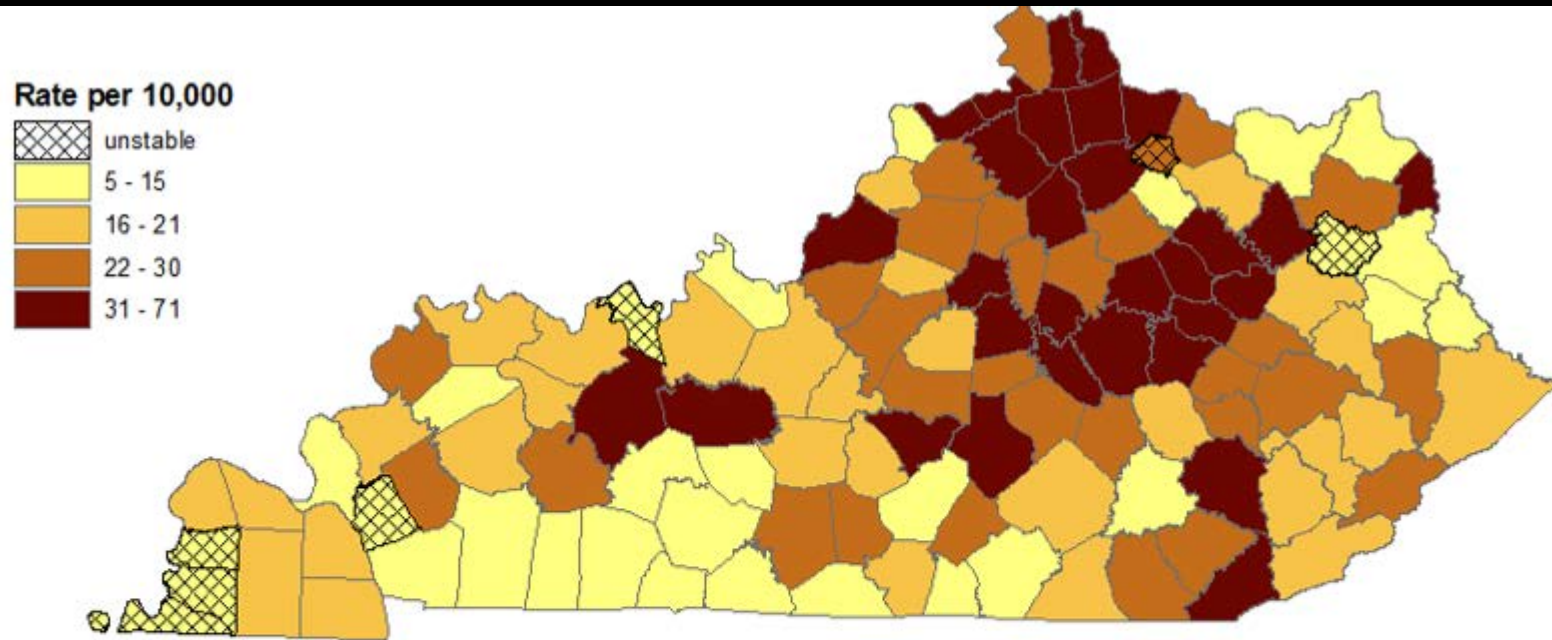
DATA ANALYSES

KENTUCKY RESIDENT DRUG OVERDOSE FATALITY NUMBERS, 2016-2017



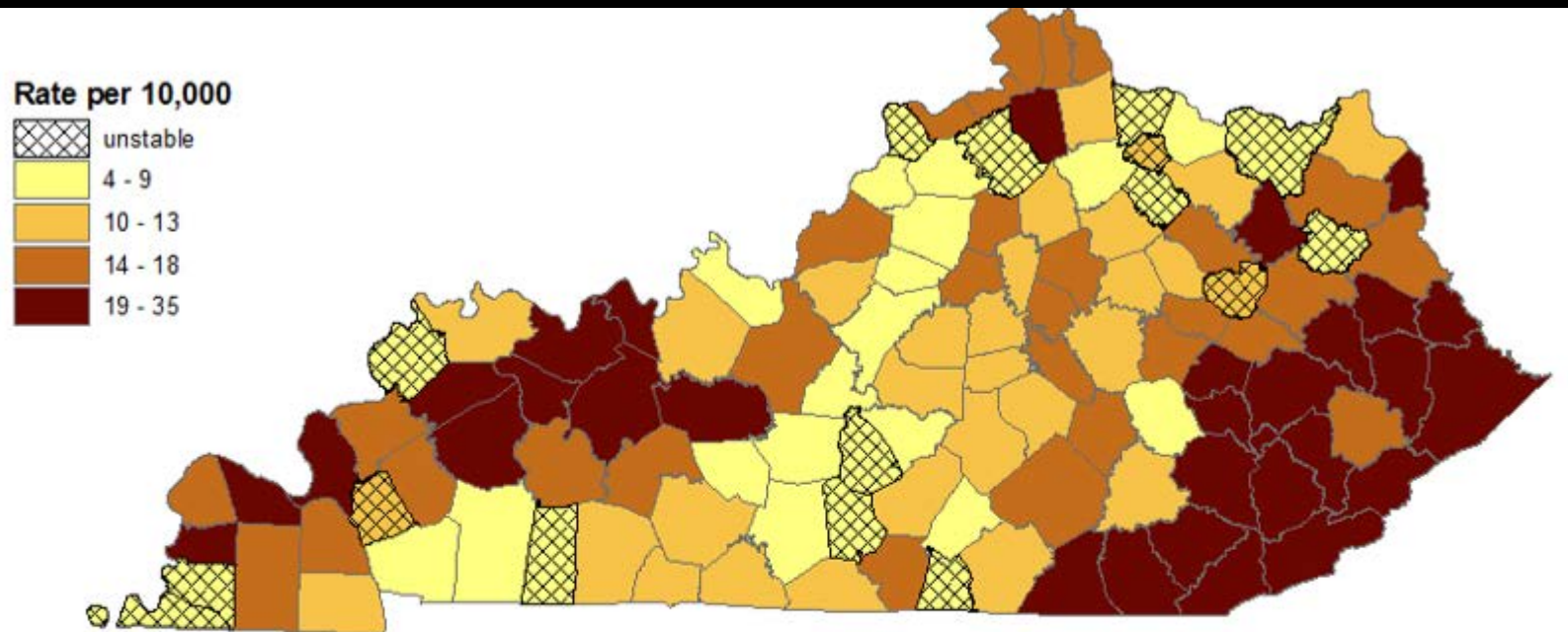
Count is the number of drug overdose deaths by county of residence. Produced by the Kentucky Injury Prevention and Research Center, as a bona fide agent for the Kentucky Department for Public Health. September 2018. Data source: Kentucky Death Certificate Database [2016-2017], Frankfort, KY: Kentucky Office of Vital Statistics, Cabinet for Health and Family Services. Data are provisional and subject to change.

KENTUCKY RESIDENT DRUG OVERDOSE-RELATED EMERGENCY DEPARTMENT VISIT RATES, 2016-2017



Rates are based on the number of drug overdose related events resulting in emergency department visits per 10,000 Kentucky residents. Emergency department visits resulting in inpatient hospitalizations were not included in emergency department visits counts. Rates based on counts less than 20 may be unstable. Counts are based on county of residence. Produced by the Kentucky Injury Prevention and Research Center, as a bona fide agent for the Kentucky Department for Public Health. September 2018. Data source: Kentucky Outpatient Hospitalization Claim Files [2016-2017], Frankfort, KY: Cabinet for Health and Family Services, Office of Health Policy. Data are provisional and subject to change.

KENTUCKY RESIDENT DRUG OVERDOSE-RELATED INPATIENT HOSPITALIZATION RATES, 2016-2017

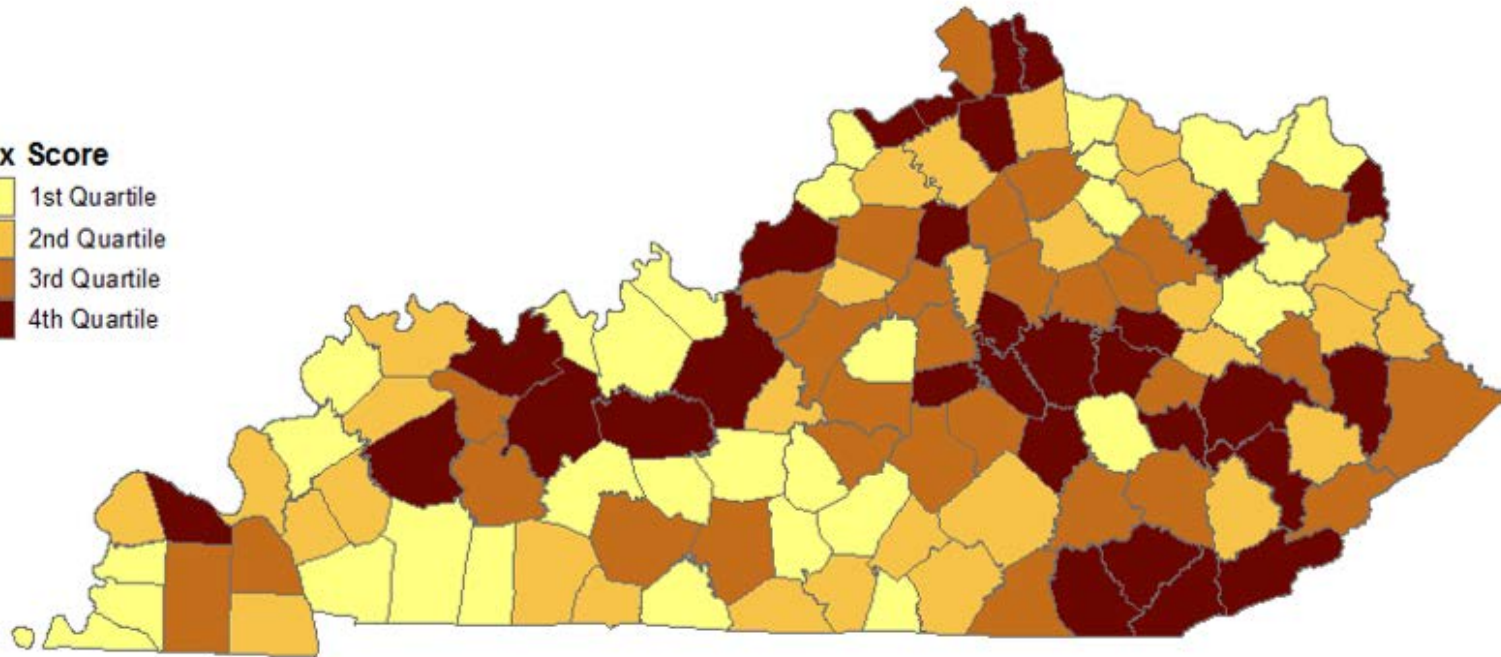


Rates are based on the number of drug overdose related events resulting in inpatient hospitalizations per 10,000 Kentucky residents among acute care facilities. Rates based on counts less than 20 may be unstable. Counts are based on county of residence. Produced by the Kentucky Injury Prevention and Research Center, as a bona fide agent for the Kentucky Department for Public Health. September 2018. Data source: Kentucky Inpatient Hospitalization Claim Files [2016-2017], Frankfort, KY: Cabinet for Health and Family Services, Office of Health Policy. Data are provisional and subject to change.

KENTUCKY RESIDENT DRUG OVERDOSE BURDEN SCORES, 2016-2017

Index Score

| | |
|---|--------------|
|  | 1st Quartile |
|  | 2nd Quartile |
|  | 3rd Quartile |
|  | 4th Quartile |

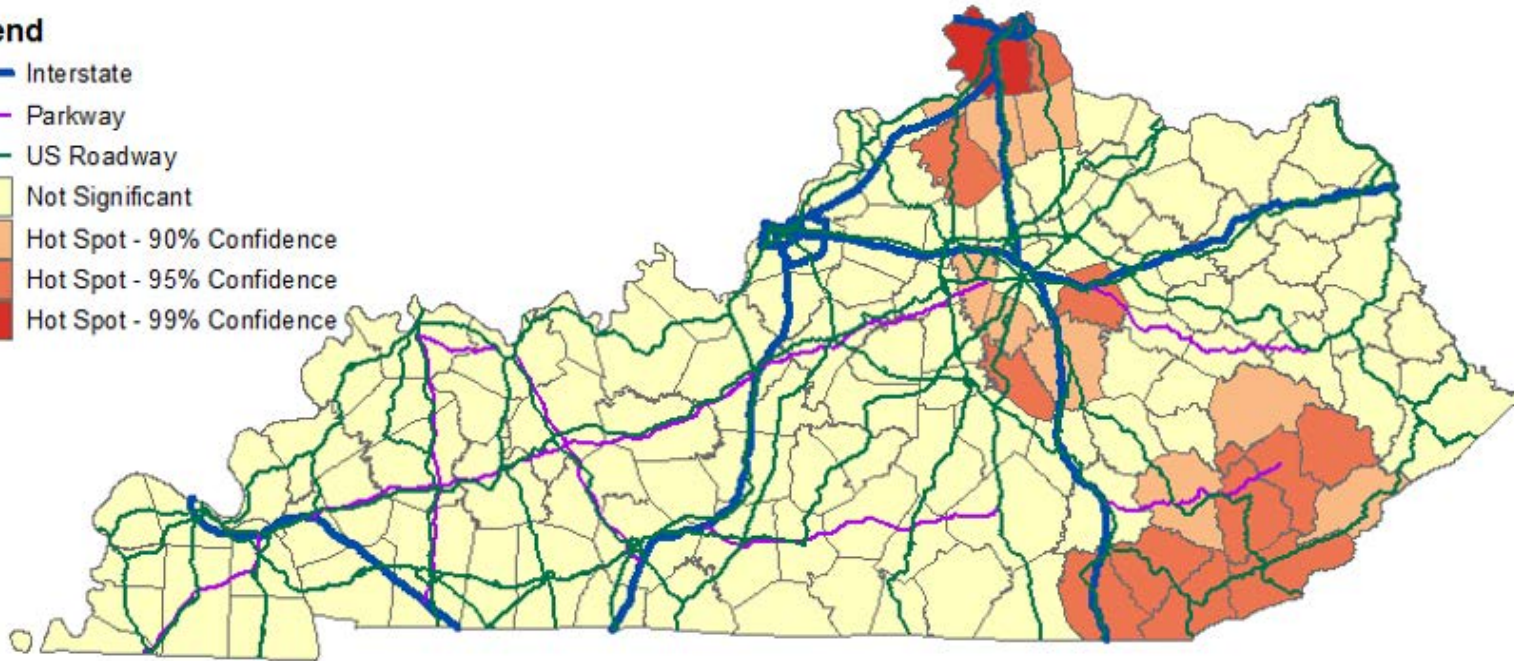


Index Score is calculated by averaging county ranks in the 1) drug overdose related deaths; 2) drug arrest rates; 3) drug overdose related emergency department rates; and, 4) drug overdose related hospitalization rates. Produced by the Kentucky Injury Prevention and Research Center, as a bona fide agent for the Kentucky Department for Public Health. September 2018. Data Sources: Kentucky Death Certificate Database, Kentucky Office of Vital Statistics, Cabinet for Health and Family Services; Crime in Kentucky: Commonwealth of Kentucky Crime Reports, Kentucky State Police (KSP); Kentucky Outpatient Services Database, Office of Health Policy; Kentucky Inpatient Hospitalization Claims Files; Cabinet for Health and Family Services, Office of Health Policy. Data are provisional and subject to change.

KENTUCKY RESIDENT DRUG OVERDOSE BURDEN HOT SPOTS, 2016-2017

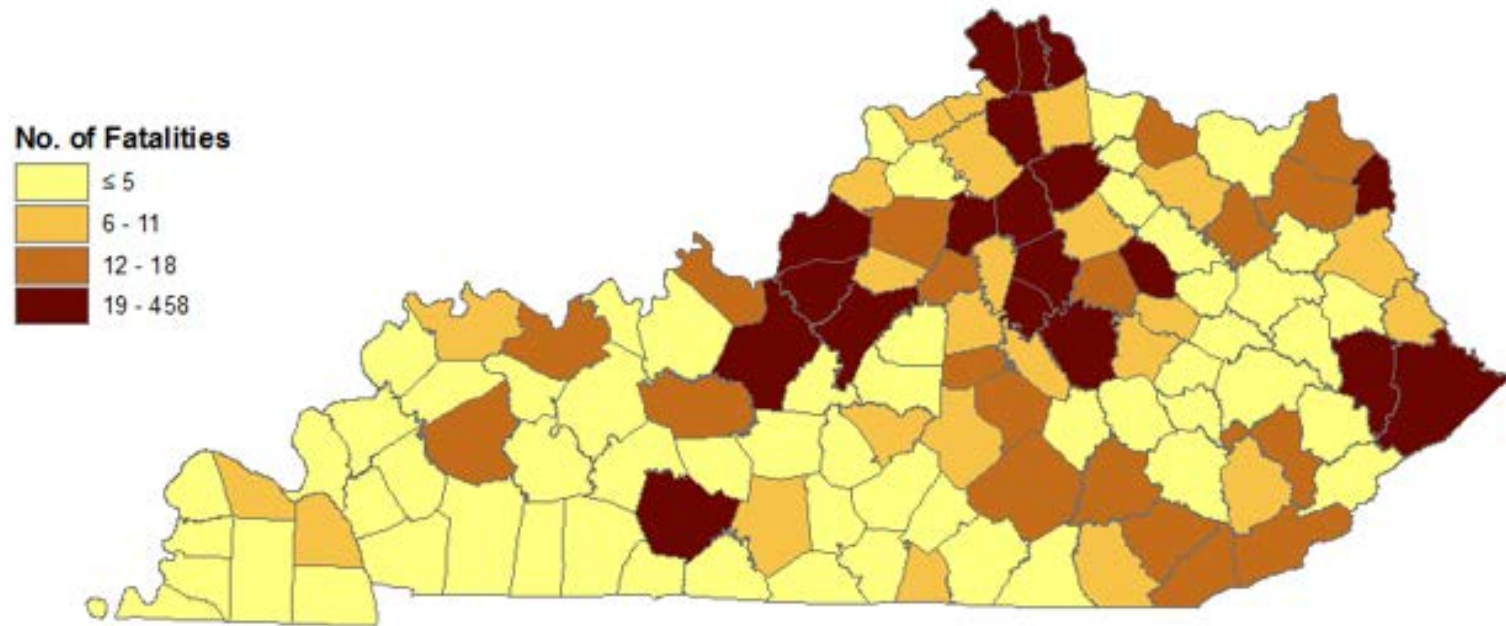
Legend

- Interstate
- Parkway
- US Roadway
- Not Significant
- Hot Spot - 90% Confidence
- Hot Spot - 95% Confidence
- Hot Spot - 99% Confidence



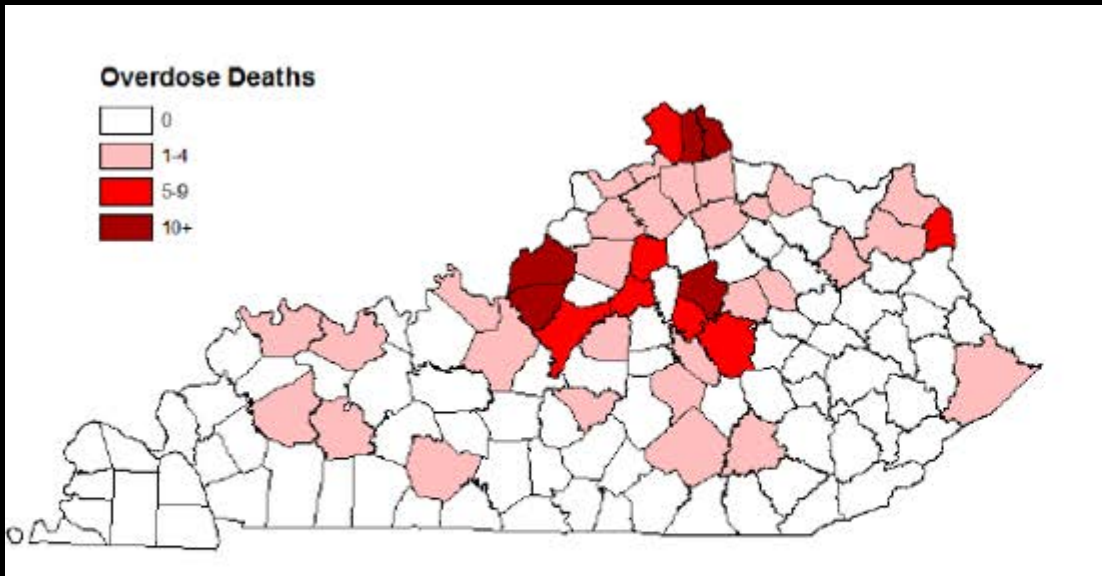
Index Score is calculated by averaging county ranks in the 1) drug overdose related deaths; 2) drug arrest rates; 3) drug overdose related emergency department rates; and, 4) drug overdose related hospitalization rates. Produced by the Kentucky Injury Prevention and Research Center, as a bona fide agent for the Kentucky Department for Public Health. September 2018. Data Sources: Kentucky Death Certificate Database, Kentucky Office of Vital Statistics, Cabinet for Health and Family Services; Crime in Kentucky: Commonwealth of Kentucky Crime Reports, Kentucky State Police (KSP); Kentucky Outpatient Services Database, Office of Health Policy; Kentucky Inpatient Hospitalization Claims Files; Cabinet for Health and Family Services, Office of Health Policy. Data are provisional and subject to change.

KENTUCKY RESIDENT OPIOID-RELATED OVERDOSE FATALITY COUNTS, 2016-2017

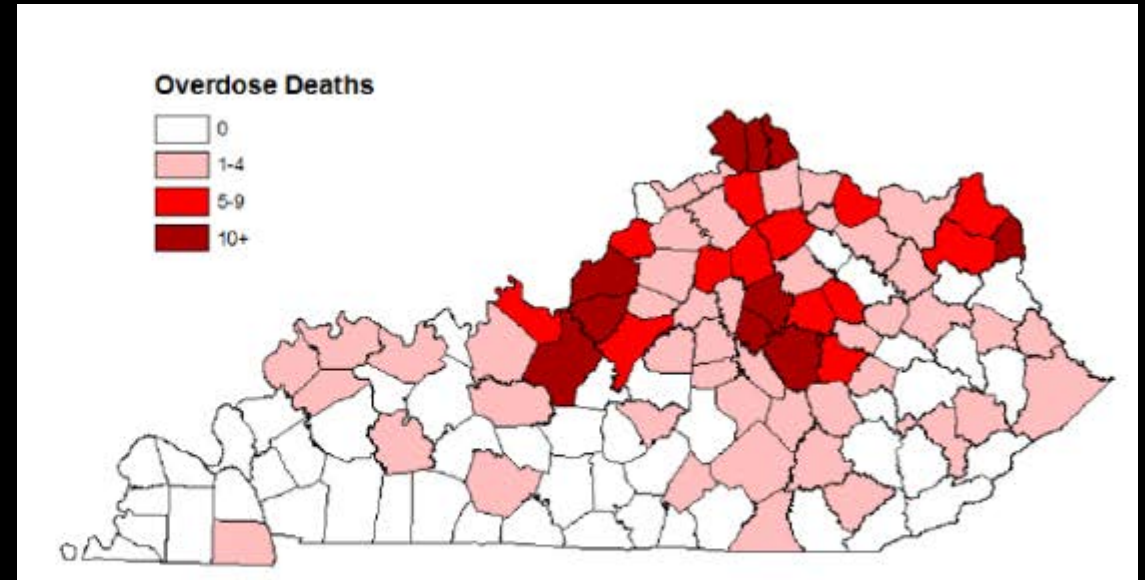


Drugs included are buprenorphine, cocaine, codeine, fentanyl, heroin, hydrocodone, hydroprmorphone, methadone, morphine, opiate, opioid, oxycodone, oxymorphone, tramadol, and fentanyl analogs. Count is the number of drug overdose fatalities by county of residence. Produced by the Kentucky Injury Prevention and Research Center, as a bona fide agent for the Kentucky Department for Public Health. October 2018. Data source: Kentucky Death Certificate Database [2016-2017], Frankfort, KY: Kentucky Office of Vital Statistics, Cabinet for Health and Family Services. Data are provisional and subject to change.

KENTUCKY RESIDENT HEROIN OVERDOSE FATALITY NUMBERS, 2017



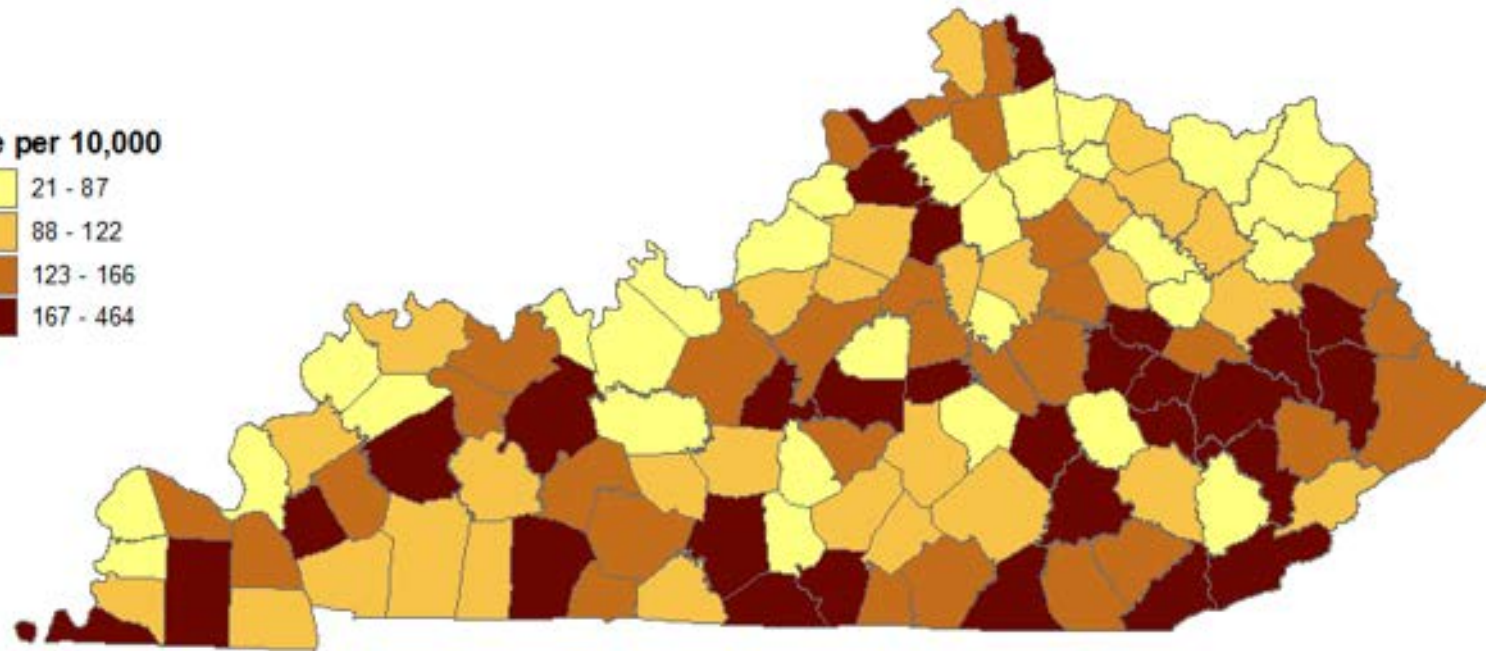
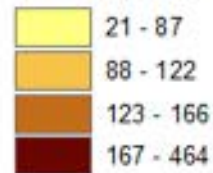
KENTUCKY RESIDENT FENTANYL OVERDOSE FATALITY NUMBERS, 2017



Produced by the Kentucky Injury Prevention and Research Center, as bona fide agent for the Kentucky Department for Public Health, August 2018. Data source: Kentucky Death Certificate Database, Kentucky Office of Vital Statistics, Cabinet for Health and Family Services. This report was supported by Cooperative Agreement Number 6 NU17CE002732-03-04, funded by the Centers for Disease Control and Prevention. Its contents are solely the responsibility of the authors and do not necessarily represent the official views of the Centers for Disease Control and Prevention or the Department of Health and Human Services.

OPIOID- RELATED ARREST RATES BY KENTUCKY COUNTY OF OCCURRENCE, 2016-2017

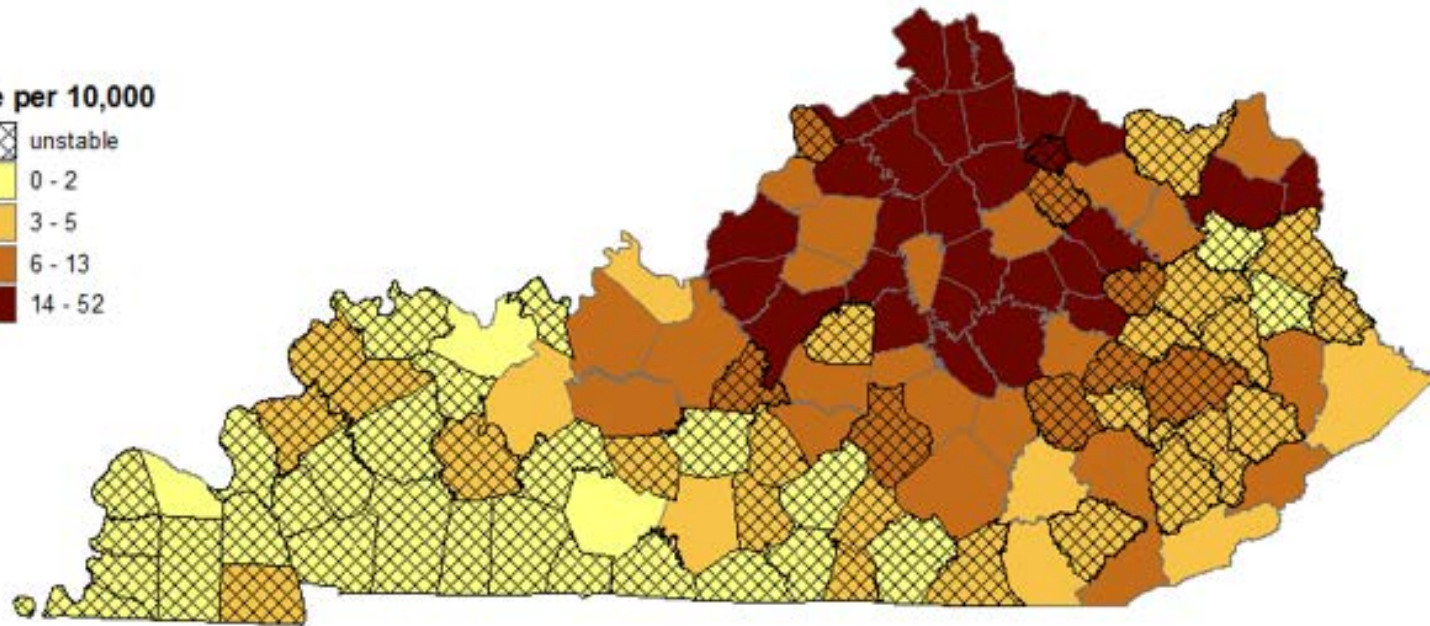
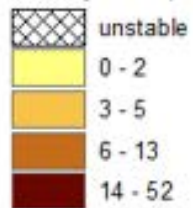
Rate per 10,000



Arrests are for the following drugs: opium or cocaine and their derivatives, heroin, and other drugs and synthetic narcotics. Rates are based on the number of drug related arrests per 10,000 population. Counts are based on county of occurrence. Produced by the Kentucky Injury Prevention and Research Center, as a bona fide agent for the Kentucky Department for Public Health. October 2018. Data source: Crime in Kentucky: Commonwealth of Kentucky 2016-2017 Crime Reports, Frankfort, KY: Kentucky State Police. Data are provisional and subject to change.

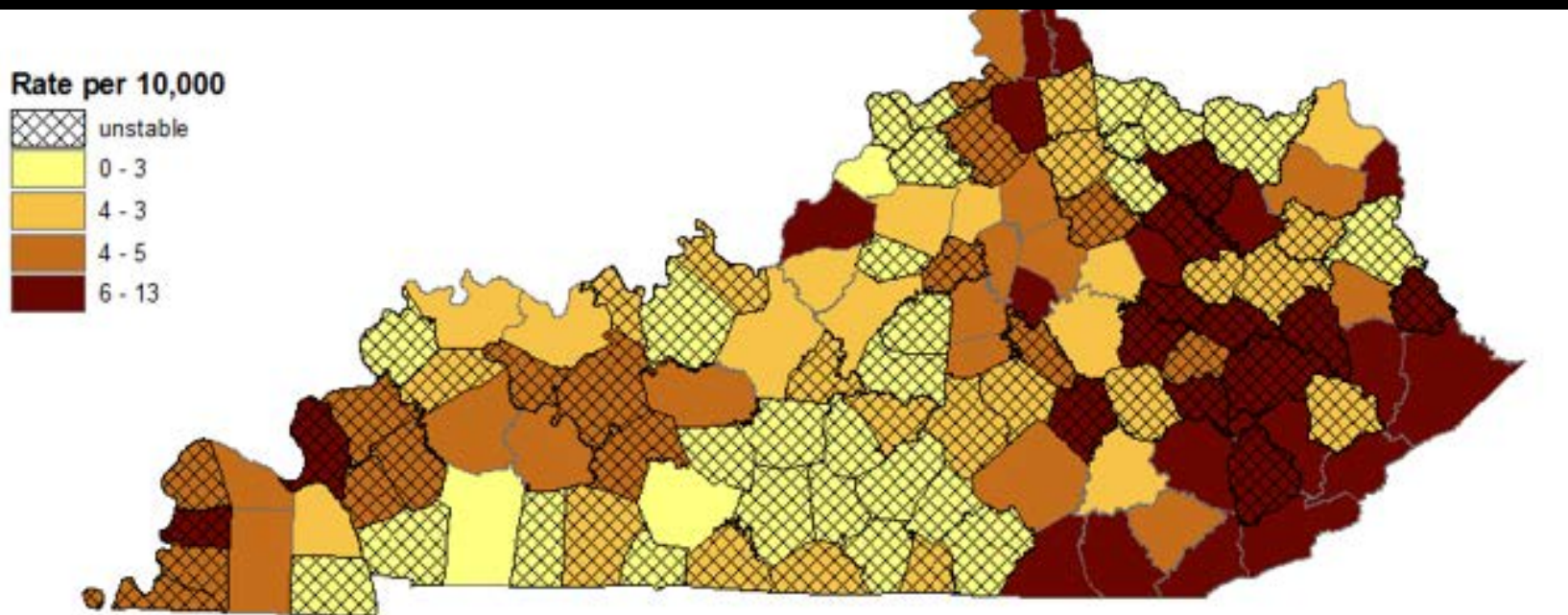
KENTUCKY RESIDENT OPIOID- RELATED EMERGENCY DEPARTMENT VISIT RATES, 2016-2017

Rate per 10,000



Drugs contributing to emergency department visits include cocaine, heroin, methadone, narcotics, opium, other opioids, synthetic narcotics (ICD-10-CM T40.0-T40.6, T413). Rates are based on the number of drug overdose related events resulting in emergency department visits per 10,000 Kentucky residents. Emergency department visits resulting in inpatient hospitalizations were not included in emergency department visits counts. Rates based on counts less than 20 may be unstable. Counts are based on county of residence. Produced by the Kentucky Injury Prevention and Research Center, as a bona fide agent for the Kentucky Department for Public Health. October 2018. Data source: Kentucky Outpatient Hospitalization Claim Files [2016-2017], Frankfort, KY: Cabinet for Health and Family Services, Office of Health Policy. Data are provisional and subject to change.

KENTUCKY RESIDENT OPIOID- RELATED HOSPITALIZATION RATES, 2016-2017

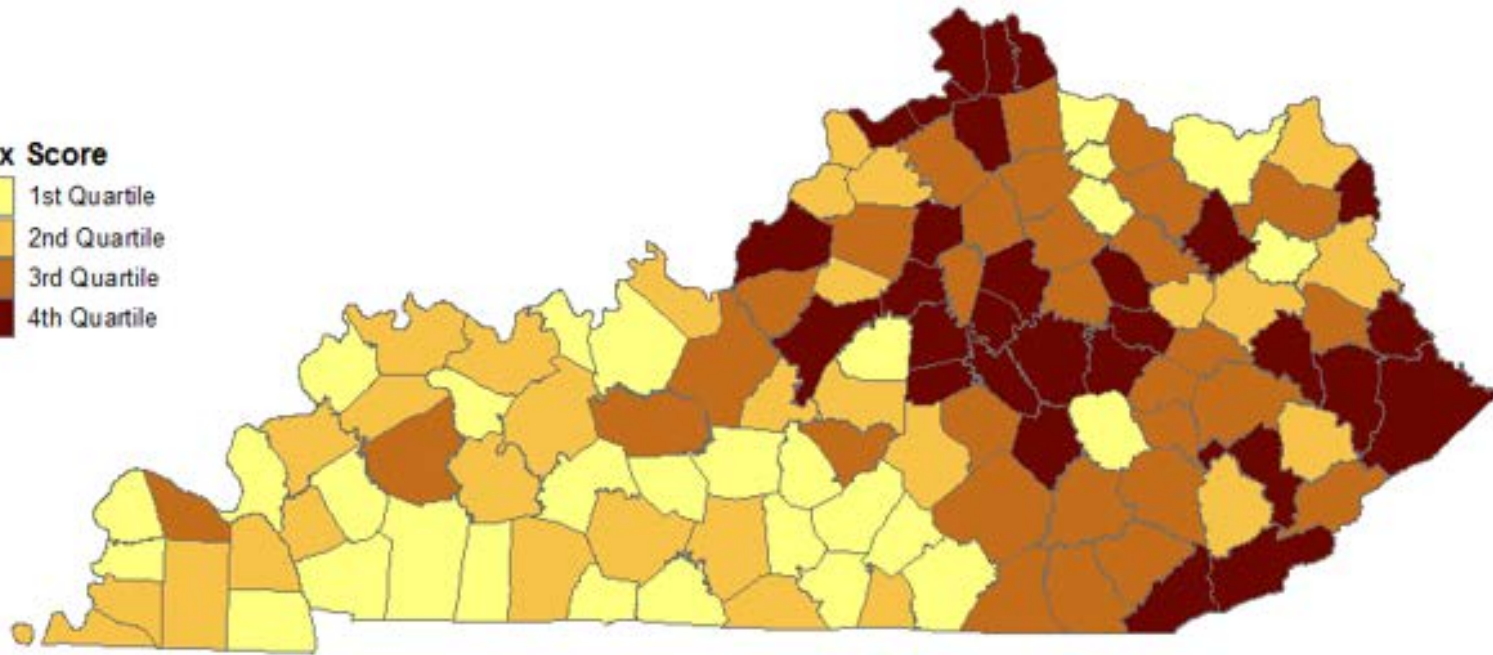


Drugs contributing to hospitalizations include cocaine, heroin, methadone, narcotics, opium, other opioids, synthetic narcotics (ICD-10-CM T40.0-T40.6, T413). Rates are based on the number of drug overdose related events resulting in inpatient hospitalizations per 10,000 Kentucky residents among acute care facilities. Rates based on counts less than 20 may be unstable. Counts are based on county of residence. Produced by the Kentucky Injury Prevention and Research Center, as a bona fide agent for the Kentucky Department for Public Health, October 2018. Data source: Kentucky Inpatient Hospitalization Claim Files [2016-2017], Frankfort, KY: Cabinet for Health and Family Services, Office of Health Policy. Data are provisional and subject to change.

KENTUCKY OPIOID- RELATED DRUG OVERDOSE BURDEN SCORES, 2016-2017

Index Score

| | |
|---|--------------|
|  | 1st Quartile |
|  | 2nd Quartile |
|  | 3rd Quartile |
|  | 4th Quartile |

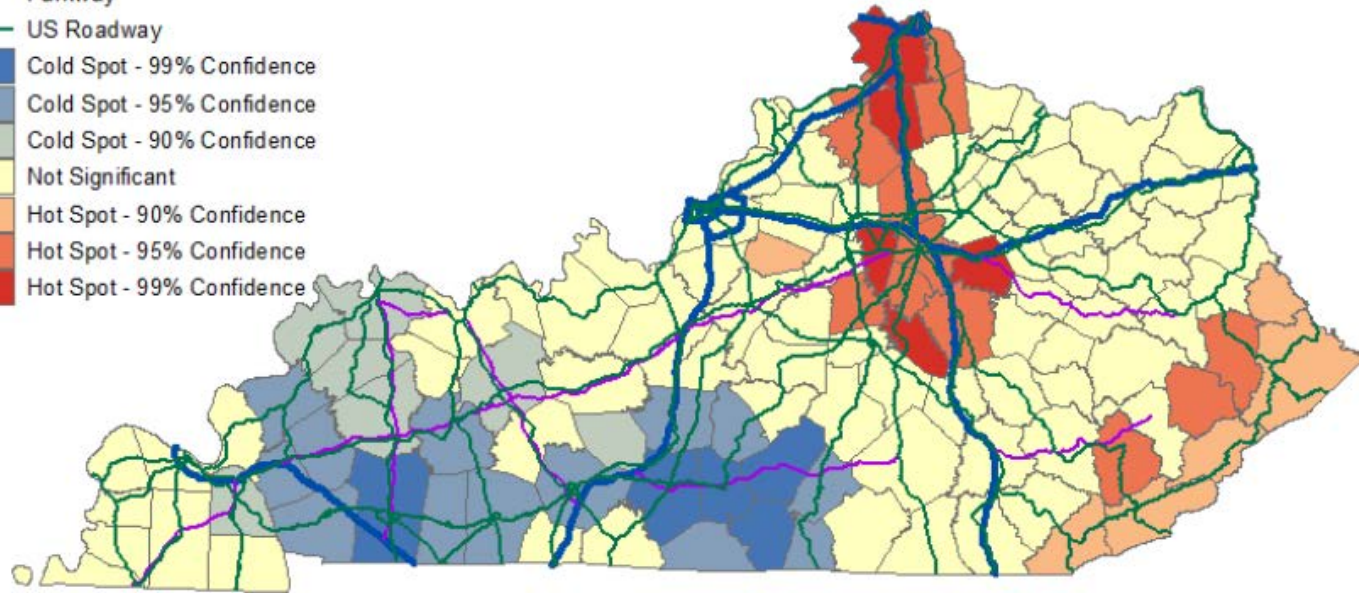


Index Score is calculated by averaging county ranks in the 1) drug overdose related fatalities; 2) drug arrest rates; 3) drug overdose related emergency department rates; and, 4) drug overdose related hospitalization rates. Produced by the Kentucky Injury Prevention and Research Center, as a bona fide agent for the Kentucky Department for Public Health. October 2018. Data Sources: Kentucky Death Certificate Database, Kentucky Office of Vital Statistics, Cabinet for Health and Family Services; Crime in Kentucky: Commonwealth of Kentucky Crime Reports, Kentucky State Police (KSP); Kentucky Outpatient Services Database, Office of Health Policy; Kentucky Inpatient Hospitalization Claims Files; Cabinet for Health and Family Services, Office of Health Policy. Data are provisional and subject to change.

KENTUCKY OPIOID- RELATED OVERDOSE BURDEN HOT/COLD SPOTS, 2016-2017

Legend

- Interstate
- Parkway
- US Roadway
- Cold Spot - 99% Confidence
- Cold Spot - 95% Confidence
- Cold Spot - 90% Confidence
- Not Significant
- Hot Spot - 90% Confidence
- Hot Spot - 95% Confidence
- Hot Spot - 99% Confidence



Index Score is calculated by averaging county ranks in the 1) drug overdose related fatalities; 2) drug arrest rates; 3) drug overdose related emergency department rates; and, 4) drug overdose related hospitalization rates. Produced by the Kentucky Injury Prevention and Research Center, as a bona fide agent for the Kentucky Department for Public Health. October 2018. Data Sources: Kentucky Death Certificate Database, Kentucky Office of Vital Statistics, Cabinet for Health and Family Services; Crime in Kentucky: Commonwealth of Kentucky Crime Reports, Kentucky State Police (KSP); Kentucky Outpatient Services Database, Office of Health Policy; Kentucky Inpatient Hospitalization Claims Files; Cabinet for Health and Family Services, Office of Health Policy. Data are provisional and subject to change.

DATA BRIEFS



Heroin and Methamphetamine Burden by Kentucky State Police Post

Prepared by
Ashley M. Bush, DrPH, MPH

Released by
Kentucky Injury Prevention and Research Center
333 Waller Avenue, Lexington, KY 40504



Informing Public Safety and Public Health Efforts to Address Kentucky's Drug Overdose Burden, 2015-2016

Prepared by
Ashley Bush, DrPH
Terry Burns, PhD
Dana Owsinberry, JD
Patrick Ward, MPH

Released by
Kentucky Injury Prevention and Research Center
333 Waller Avenue, Lexington, KY 40504



CONCLUSIONS

- Public Health
 - SUD treatment capacity
 - Bridge Clinics and Pathways
 - Prevention
 - FindHelpNowKY.org
 - Drug Overdose Prevention coalitions
 - Harm Reduction programs
 - Safe Communities®
 - Public Health Department accreditation
- Public Safety
 - KSP BJA grant applications to investigate illicit heroin and methamphetamine overdoses and arrests
 - Office of Highway Safety drugged driving prevention programs
 - Office of Drug Control Policy
 - ASAPs
 - State policy making